

 **BOEING**  
COMPONENT  
MAINTENANCE MANUAL

TO: ALL HOLDERS OF NO. 2 MID FAIRING ASSEMBLY COMPONENT MAINTENANCE MANUAL  
57-26-32

REVISION NO. 7 DATED NOV 01/02

HIGHLIGHTS

Pages which have been added or revised are outlined below together with the highlights of the revision. Remove and insert the affected pages as listed and enter Revision No. and date on the Record of Revision Sheet.

CHAPTER/SECTION

AND PAGE NO.

DESCRIPTION OF CHANGE

TITLE PAGE

Added Fairing Top Assemblies 113T1822-31 thru -36,  
113T1822-37G and 113T1822-38G to CMM 57-26-32 IPL.

1

TR & SB RECORD

1

301

501

REPAIR 2-1

601

REPAIR 3-1

601-603

702-703

1003,1005-1014,

1019-1050,1055-1069

501

Clarified inspections in Check section.

REPAIR-GEN

Edited without technical change.

601-602

REPAIR 1-1

601

REPAIR 2-1

601

REPAIR 3-1

601-602

702

1002

Revised NOTE about Boeing Proprietary color-coded parts  
with an alpha suffix.

**57-26-32**

HIGHLIGHTS

01.1

Page 1

Nov 01/02

 **BOEING**  
COMPONENT  
MAINTENANCE MANUAL

CHAPTER/SECTION  
AND PAGE NO.  
1015,1018

DESCRIPTION OF CHANGE  
Revised Fig. 1 (Sheet 1 and 4) to include IPL  
components for Fairing Assembly.

**57-26-32**

HIGHLIGHTS

01.1

Page 2

Nov 01/02

OUTBOARD TRAILING EDGE FLAP  
NO. 2 MID FAIRING ASSEMBLY

PART NUMBERS 113T1822-19SP,-20SP,-21,-22,-25SP,  
-26SP,-27,-28,-30SP,  
-31 THRU -36,-37G,-38G

COMPONENT MAINTENANCE MANUAL  
WITH  
ILLUSTRATED PARTS LIST

**57-26-32**

TITLE PAGE

Page 1

Nov 01/02

01.1



REVISION RECORD

- Retain this record in front of manual. On receipt of revision, insert revised pages in the manual, and enter revision number, date inserted and initial.

REVISION NUMBER	REVISION DATE	DATE FILED	BY	REVISION NUMBER	REVISION DATE	DATE FILED	BY



TEMPORARY REVISION AND SERVICE BULLETIN RECORD

BOEING SERVICE BULLETIN	BOEING TEMPORARY REVISION	OTHER DIRECTIVE	DATE OF INCORPORATION INTO MANUAL
		PRR B11016 PRR B11382-3 PRR B13100-2 PRR B11382-2	JAN 10/85 APR 01/88 NOV 01/02 NOV 01/02

**57-26-32**

TR & SB RECORD

01.1

Page 1

Nov 01/02


**BOEING**  
 COMPONENT  
 MAINTENANCE MANUAL

PAGE	DATE	CODE	PAGE	DATE	CODE
57-26-32			REPAIR-GENERAL		
			*601	NOV 01/02	01.1
			*602	NOV 01/02	01.1
TITLE PAGE			603	JUL 10/83	01
*1	NOV 01/02	01.1	604	BLANK	
2	BLANK		REPAIR 1-1		
REVISION RECORD			*601	NOV 01/02	01.1
1	JUL 10/83	01	602	BLANK	
2	BLANK		REPAIR 2-1		
TR & SB RECORD			*601	NOV 01/02	01.1
*1	NOV 01/02	01.1	602	BLANK	
2	BLANK		REPAIR 3-1		
LIST OF EFFECTIVE PAGES			*601	NOV 01/02	01.1
*1	NOV 01/02	01	*602	NOV 01/02	01.1
THRU LAST PAGE			*603	NOV 01/02	01.1
CONTENTS			*604	BLANK	
1	OCT 10/83	01.1	ASSEMBLY		
2	BLANK		701	JUL 01/98	01.1
INTRODUCTION			*702	NOV 01/02	01.1
1	JUL 10/83	01	*703	NOV 01/02	01.1
2	BLANK		704	BLANK	
DESCRIPTION & OPERATION			ILLUSTRATED PARTS LIST		
1	JUL 10/83	01	1001	JUL 10/83	01
2	BLANK		*1002	NOV 01/02	01.1
DISASSEMBLY			*1003	NOV 01/02	01.1
*301	NOV 01/02	01.1	*1004	NOV 01/02	01.1
302	BLANK		*1005	NOV 01/02	01.1
CLEANING			*1006	NOV 01/02	01.1
401	JUL 01/98	01.1	*1007	NOV 01/02	01.1
402	BLANK		*1008	NOV 01/02	01.1
CHECK			*1009	NOV 01/02	01.1
*501	NOV 01/02	01.1	*1010	NOV 01/02	01.1
502	BLANK		*1011	NOV 01/02	01.1
			*1012	NOV 01/02	01.1
			*1013	NOV 01/02	01.1
			*1014	NOV 01/02	01.1
			*1015	NOV 01/02	01.1
			*1016	NOV 01/02	01.1

\* = REVISED, ADDED OR DELETED

**57-26-32**EFFECTIVE PAGES  
CONTINUED Page 1  
01 Nov 01/02

PAGE	DATE	CODE	PAGE	DATE	CODE
ILLUSTRATED PARTS LIST		CONT.	ILLUSTRATED PARTS LIST		CONT.
*1017	NOV 01/02	01.1	*1059	NOV 01/02	01.1
*1018	NOV 01/02	01.1	*1060	NOV 01/02	01.1
*1019	NOV 01/02	01.1	*1061	NOV 01/02	01.1
*1020	NOV 01/02	01.1	*1062	NOV 01/02	01.1
*1021	NOV 01/02	01.1	*1063	NOV 01/02	01.1
*1022	NOV 01/02	01.1	*1064	NOV 01/02	01.1
*1023	NOV 01/02	01.1	*1065	NOV 01/02	01.1
*1024	NOV 01/02	01.1	*1066	NOV 01/02	01.1
*1025	NOV 01/02	01.1	*1067	NOV 01/02	01.1
*1026	NOV 01/02	01.1	*1068	NOV 01/02	01.1
*1027	NOV 01/02	01.1	*1069	NOV 01/02	01.1
*1028	NOV 01/02	01.1	*1070	BLANK	
*1029	NOV 01/02	01.1			
*1030	NOV 01/02	01.1			
*1031	NOV 01/02	01.1			
*1032	NOV 01/02	01.1			
*1033	NOV 01/02	01.1			
*1034	NOV 01/02	01.1			
*1035	NOV 01/02	01.1			
*1036	NOV 01/02	01.1			
*1037	NOV 01/02	01.1			
*1038	NOV 01/02	01.1			
*1039	NOV 01/02	01.1			
*1040	NOV 01/02	01.1			
*1041	NOV 01/02	01.1			
*1042	NOV 01/02	01.1			
*1043	NOV 01/02	01.1			
*1044	NOV 01/02	01.1			
*1045	NOV 01/02	01.1			
*1046	NOV 01/02	01.1			
*1047	NOV 01/02	01.1			
*1048	NOV 01/02	01.1			
*1049	NOV 01/02	01.1			
*1050	NOV 01/02	01.1			
*1051	NOV 01/02	01.1			
*1052	NOV 01/02	01.1			
*1053	NOV 01/02	01.1			
*1054	NOV 01/02	01.1			
*1055	NOV 01/02	01.1			
*1056	NOV 01/02	01.1			
*1057	NOV 01/02	01.1			
*1058	NOV 01/02	01.1			

\* = REVISED, ADDED OR DELETED

# 57-26-32

EFFECTIVE PAGES  
 LAST PAGE Page 2  
 01 Nov 01/02



TABLE OF CONTENTS

<u>Paragraph Title</u>	<u>Page</u>
Description and Operation. . . . .	1
Testing/Trouble Shooting (not applicable)	
Disassembly. . . . .	301
Cleaning . . . . .	401
Check. . . . .	501
Repair . . . . .	601
Assembly . . . . .	701
Fits and Clearances (not applicable)	
Special Tools (not applicable)	
Illustrated Parts List . . . . .	1001

**57-26-32**

CONTENTS

Page 1

Oct 10/83

01.1





## INTRODUCTION

The instructions in this manual provide the information necessary to perform maintenance functions ranging from simple checks and replacement to complete shop-type repair.

This manual is divided into separate sections:

- |  |                              |
|--|------------------------------|
| 1. Title Page                                      | 4. List of Effective Pages   |
| 2. Record of Revisions                             | 5. Table of Contents         |
| 3. Temporary Revision &<br>Service Bulletin Record | 6. Introduction              |
|  | 7. Procedures & IPL Sections |

Refer to the Table of Contents for the page location of applicable sections. An asterisked flagnote \*[ ] in place of the page number indicates that no special instructions are provided since the function can be performed using standard industry practices.

The beginning of the REPAIR section includes a list of the separate repairs, a list of applicable standard Boeing practices, and an explanation of the True Position Dimensioning symbols used.

An explanation of the use of the Illustrated Parts List is provided in the Introduction to that section.

All weights and measurements used in the manual are in English units, unless otherwise stated. When metric equivalents are given they will be in parentheses following the English units.

Design changes, optional parts, configuration differences and Service Bulletin modifications create alternate part numbers. These are identified in the Illustrated Parts List (IPL) by adding an alphabetical character to the basic item number. The resulting item number is called an alpha-variant. Throughout the manual, IPL basic item number references also apply to alpha-variants unless otherwise indicated.

Verification:

Assembly

**57-26-32**

INTRODUCTION

01

Page 1

Jul 10/83



NO. 2 MID FAIRING ASSEMBLY

DESCRIPTION AND OPERATION

1. Description and Operation

A. The No. 2 mid fairing assembly is an aerodynamic cover for the outboard trailing edge flap hinge and hinge control links. The mid fairing is attached to the forward fairing by two hinged fitting assemblies. A hinged fitting assembly attaches the mid fairing to the flap hinge.

2. Leading Particulars (Approximate)

Width -- 24 inches  
Length -- 46 inches  
Height -- 11 inches  
Weight -- 11 pounds

57-26-32

DESCRIPTION & OPERATION

01

Page 1

Jul 10/83



### DISASSEMBLY

**NOTE:** Disassemble this component only as necessary to complete fault isolation, determine the serviceability of parts, perform required repairs and restore the unit to serviceable condition.

1. Use standard industry practices for disassembly of this component.
2. Record location and thickness of shims (167, 177, 295A, IPL Fig. 1); (225, 230, 385, IPL Fig. 2) for reference during assembly.
3. If removal of fitting assemblies (135B, 145C, 241, 215, IPL Fig. 1); (155, 165, 255, 285, IPL Fig. 2) is necessary and they have been sealed with BMS 5-95 sealant, refer to SOPM 20-10-08 to prevent damage to bond assembly (315C, 315D, 320C, 320D, IPL Fig. 1); (405, 405A, 410, 410A, IPL, Fig. 2).

# 57-26-32

DISASSEMBLY

01.1

Page 301

Nov 01/02



CLEANING

CAUTION: DO NOT VAPOR DEGREASE GRAPHITE/ARAMID EPOXY STRUCTURES WITH CHLORINATED CLEANING AGENTS SUCH AS METHYLENE CHLORIDE, TRICHLOROETHYLENE, AND TRICHLOROETHANE. CHLORINATED CLEANING AGENTS WILL CAUSE DAMAGE TO GRAPHITE/ARAMID EPOXY STRUCTURES.

DO NOT PUT PARTS IN THE SOLVENT OR LET SOLVENT STAY ON THE PARTS.

1. Clean all parts by standard industry practices and the instructions in SOPM 20-30-03.

57-26-32

CLEANING  
Page 401  
Jul 01/98

01.1

**BOEING**  
COMPONENT  
MAINTENANCE MANUALCHECK

1. Do a visual check for any obvious damage on all visible parts according to standard industry practices. Do the penetrant check if cracks or damage are seen or if you think there are cracks or damage.
2. Penetrant check per SOPM 20-20-02 -- Hinge fittings (190D, 190E, 195F, 197, IPL Fig. 1); (205, 210, 215, 220, IPL Fig. 2); Link fitting (240, 244, 244G, IPL Fig. 1); (280, IPL Fig. 2); clip (260, IPL Fig. 1); (340, IPL Fig. 2); frame (345, 350, 355, 357, 360, 363, 405, 410, 415, 420, 465, 470, 475, 480, IPL Fig. 1); (430, 435, 440, 445, 450, 455, 460, 465, IPL Fig. 2).
3. Visual Check
  - A. Do a check of the honeycomb structure and bonded parts for evidence of delamination, internal water, scratches, and contour defects.
    - (1) If you see delamination or impact damage when you do a visual check, do an ultrasonic inspection or a tap test to find all damage. Refer to the 767 Nondestructive Test Manual, Part 4, 51-00-02 or Part 1, 51-05-01.

**NOTE:** For the tap test, use a solid metal disk and tap the surface area lightly but firmly. The void areas will produce a dull sound as opposed to a sharp sound on a solid bonded area. Refer to the 767 Nondestructive Test Manual, Part 1, 51-05-01.
    - (2) Do a check on areas you suspect of containing water with the radiographic or thermographic method. Refer to the 767 Nondestructive Test Manual, Part 9, 51-00-01.
    - (3) Do a check on the edges of the panel carefully for cuts and abrasions. Delamination starts very easily from damage to an edgemember of honeycomb panel.
  - B. Refer to 767 Structural Repair Manual, 57-53-70, for allowable damage data.

**57-26-32**

CHECK

01.1

Page 501

Nov 01/02

REPAIR – GENERAL1. Content

- A. Repair, refinish and replacement procedures are included in separate repair sections as follows:

<u>P/N</u>	<u>NAME</u>	<u>REPAIR</u>
113T1833	FITTING ASSEMBLY	1-1
113T1830	FITTING ASSEMBLY	2-1
- -	MISCELLANEOUS PARTS	3-1

2. Standard Practices

- A. Refer to the following Standard Practices Overhaul Manuals (SOPM), as applicable, for details of procedures in individual repairs.

20-10-06 Repair of Conductive Coatings  
 20-30-02 Stripping of Protective Finishes  
 20-30-03 General Cleaning Procedures  
 20-41-01 Decoding Table for Boeing Finish Codes  
 20-41-02 Application of Chemical and Solvent Resistant Finishes  
 20-43-01 Chromic Acid Anodizing  
 20-50-03 Bearing Installation and Retention  
 20-50-07 Lubrication

3. Materials

NOTE: Equivalent substitutes may be used.

- A. Coating -- BMS 10-21, Type 1 (Ref SOPM 20-60-02)
- B. Enamel -- BMS 10-60 BAC 707 gray gloss (Ref SOPM 20-60-02)  
 -- BMS 10-60, Type 2 gloss according to operator's standard color scheme (Ref SOPM 20-60-02)
- C. Filler -- Dexter 28-C-1 Static Conditioner (Ref SOPM 20-60-02)
- D. Grease -- MIL-G-23827 (Ref SOPM 20-60-03)
- E. Primer -- BMS 10-11, Type 1 (Ref SOPM 20-60-02)  
 -- BMS 10-79, Type 2 (Ref SOPM 20-60-02)

57-26-32

REPAIR-GENERAL

01.1

Page 601

Nov 01/02

- | F. Sealant -- BMS 5-95 (Ref SOPM 20-60-04)
- | G. Surfacers -- Dexter 8-W-5 (Ref SOPM 20-60-02)  
Epocast 156 (Ref SOPM 20-60-02)

**57-26-32**

REPAIR-GENERAL

01.1

Page 602

Nov 01/02

**4. Dimensioning Symbols**

A. Standard True Position Dimensioning Symbols used in applicable repair procedures are shown in Fig. 601.

—	STRAIGHTNESS	$\oplus$	THEORETICAL EXACT POSITION OF A FEATURE (TRUE POSITION)
$\square$	FLATNESS	$\varnothing$	DIAMETER
$\perp$	PERPENDICULARITY (OR SQUARENESS)	BASIC (BSC) OR DIM	A THEORETICALLY EXACT DIMENSION USED TO DESCRIBE SIZE, SHAPE OR LOCATION OF A FEATURE FROM WHICH PERMISSIBLE VARIATIONS ARE ESTABLISHED BY TOLERANCES ON OTHER DIMENSIONS OR NOTES.
//	PARALLELISM	-A-	DATUM
$\bigcirc$	ROUNDNESS	$\textcircled{M}$	MAXIMUM MATERIAL CONDITION (MMC)
$\bigcirc$	CYLINDRICITY	$\textcircled{S}$	REGARDLESS OF FEATURE SIZE (RFS)
$\frown$	PROFILE OF A LINE	$\textcircled{P}$	PROJECTED TOLERANCE ZONE
$\triangle$	PROFILE OF A SURFACE		
$\odot$	CONCENTRICITY		
$\equiv$	SYMMETRY		
$\sphericalangle$	ANGULARITY		
$\nearrow$	RUNOUT		

**EXAMPLES**

$\boxed{\text{—} \quad 0.002}$	STRAIGHT WITHIN 0.002	$\boxed{\textcircled{C} \quad \varnothing \quad 0.0005}$	CONCENTRIC TO C WITHIN 0.0005 DIAMETER (FULL INDICATOR MOVEMENT)
$\boxed{\perp \quad B \quad 0.002}$	PERPENDICULAR TO B WITHIN 0.002	$\boxed{\equiv \quad A \quad 0.010}$	SYMMETRICAL WITH A WITHIN 0.010
$\boxed{\parallel \quad A \quad 0.002}$	PARALLEL TO A WITHIN 0.002	$\boxed{\sphericalangle \quad A \quad 0.005}$	ANGULAR TOLERANCE 0.005 WITH A
$\boxed{\bigcirc \quad 0.002}$	ROUND WITHIN 0.002	$\boxed{\oplus \quad B \quad \varnothing \quad 0.002 \quad \textcircled{S}}$	LOCATED AT TRUE POSITION WITHIN 0.002 DIA IN RELATION TO DATUM B, REGARDLESS OF FEATURE SIZE
$\boxed{\bigcirc \quad 0.010}$	CYLINDRICAL SURFACE MUST LIE BETWEEN TWO CONCENTRIC CYLINDERS, ONE OF WHICH HAS A RADIUS 0.010 INCH GREATER THAN THE OTHER	$\boxed{\perp \quad A \quad \varnothing \quad 0.010 \quad \textcircled{M} \quad 0.510 \quad \textcircled{P}}$	AXIS IS TOTALLY WITHIN A CYLINDER OF 0.010-INCH DIAMETER, PERPENDICULAR TO, AND EXTENDING 0.510-INCH ABOVE, DATUM A, MAXIMUM MATERIAL CONDITION
$\boxed{\frown \quad A \quad 0.006}$	EACH LINE ELEMENT OF THE SURFACE AT ANY CROSS SECTION MUST LIE BETWEEN TWO PROFILE BOUNDARIES 0.006 INCH APART IN RELATION TO DATUM PLANE A	$\boxed{2.000}$	EXACT DIMENSION IS 2.000
$\boxed{\triangle \quad A \quad 0.020}$	SURFACES MUST LIE WITHIN PARALLEL BOUNDARIES 0.02 INCH APART AND EQUALLY DISPOSED ABOUT TRUE PROFILE	OR 2.000 BSC	

True Position Dimensioning Symbols  
 Figure 601



FITTING ASSEMBLY - REPAIR 1-1

113T1833-21, -22, -29, -30, -33, -34, -41, -42

NOTE: Refer to REPAIR-GENERAL for list of applicable standard practices.

1. Bearing Replacement

- A. Remove bearing (185, IPL Fig. 1); (200, IPL Fig. 2).
- B. Coat OD of bearing (185, IPL Fig. 1); (200, IPL Fig. 2) and ID of hinge fittings (190D, 190E, 195F, 197, IPL Fig. 1); (205, 210, 215, 220, IPL Fig. 2) with light film of MIL-G-23827 grease per SOPM 20-50-07.
- C. Install bearing (185, IPL Fig. 1); (200, IPL Fig. 2) and roller or anvil swage per SOPM 20-50-03 such that minimum pushout load is 844 pounds.

2. Refinish

- A. Hinge fittings (190D, 190E, 195F, 197, IPL Fig. 1); (205, 210, 215, 220, IPL Fig. 2) -- Chromic acid anodize, Type 1, and apply one coat BMS 10-11, Type 1 primer omitting primer in bearing holes (F-18.13).  
Material: Aluminum alloy.

**57-26-32**

REPAIR 1-1

01.1

Page 601

Nov 01/02

FITTING ASSEMBLY – REPAIR 2-1

113T1830-1, -7, -8

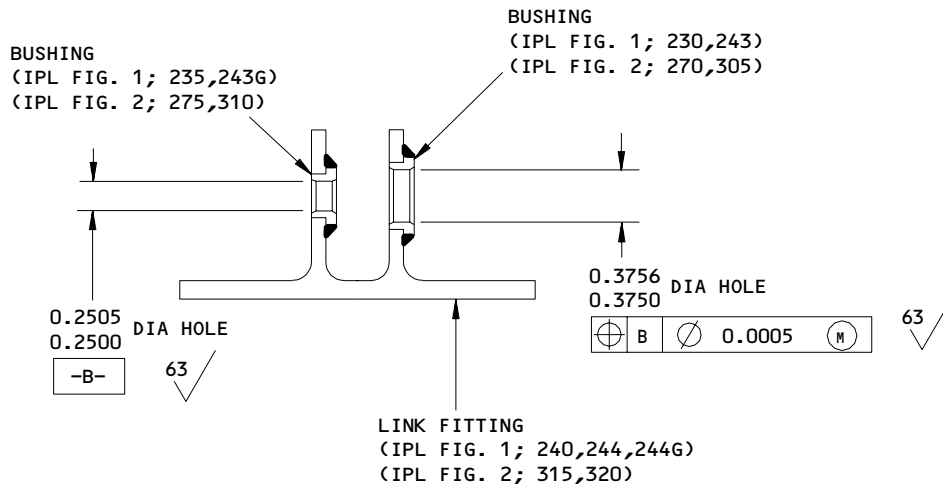
**NOTE:** Refer to REPAIR-GENERAL for list of applicable standard practices.

1. Bushing Replacement

- A. Remove bushings (230, 235, 243, 243G, IPL Fig. 1); (270, 275, 305, 310, IPL Fig. 2).
- B. Install bushings per SOPM 20-50-03 using wet BMS 5-95 sealant.
- C. Machine bushings as shown in Fig. 601.
- D. Fillet seal entire periphery of bushing flanges using BMS 5-95 sealant.
- E. Chamfer ID of both ends of bushings (230, 235, 243, 243G, IPL Fig. 1); (270, 275, 305, 310, IPL Fig. 2) 0.005 to 0.01 inch by 45 degrees.

2. Refinish

- A. Link fitting (240, 244, 244G, IPL Fig. 1); (280, 315, 320, IPL Fig. 2) -- Chromic acid anodize, type 1, and apply one coat BMS 10-11, Type 1 primer omitting primer in bushing holes (F-18.13). Material: Aluminum alloy.



ALL DIMENSIONS ARE IN INCHES

Bushing Replacement  
 Figure 601

**57-26-32**

REPAIR 2-1

01.1

Page 601

Nov 01/02


**BOEING**  
 COMPONENT  
 MAINTENANCE MANUAL
MISCELLANEOUS PARTS - REPAIR 3-1

1. Repair of parts listed in Fig. 601 consists of restoration of the original finish.

NOTE: Refer to REPAIR-GENERAL for list of applicable standard practices.

IPL FIG. & ITEM	MATERIAL	FINISH
<u>Fig. 1</u>		
Mid fairing assembly (1B,1C, (1D,1E,1F,1G,1H, 1J,1K,5B,5C,5D,5E, 5F,5G,5H,5J,5K, IPL Fig. 1); (1,5, IPL Fig. 2)		Apply one coat BMS 10-79, Type 2 primer and BMS 10-60, Type 2 gloss enamel on exterior surface and trimmed edges according to operator's standard color scheme (F-19.41-XXX).
Retainers (20,22, 90,95, IPL Fig. 1); 55,60,120,125, IPL Fig. 2)	Al alloy	Chromic acid anodize, Type 1, and apply one coat BMS 10-11, Type 1 primer (F-18.13). Apply BMS 10-60 BAC 707 gray gloss enamel (SRF-14.9813).
Clip (25,30, IPL Fig. 1); (65,70, IPL Fig. 2)	Al alloy	Chemical treat surface, colored coating. Apply one coat BMS 10-11, Type 1 primer (F-18.06). Apply BMS 10-60, BAC 707 gray gloss enamel (SRF-14.9813).
Beam (55,60, IPL Fig. 1); (87,90, IPL Fig. 2); Angle (200,205, IPL Fig. 1); (245, 250, IPL Fig. 2)	Al alloy	Chemical treat surface, colored coating. Apply one coat BMS 10-11, Type 1 primer (F-18.06). Apply BMS 10-60 BAC 707 gray gloss enamel (SRF-14.9813).

Refinish Details  
 Figure 601 (Sheet 1)

**57-26-32**

REPAIR 3-1

01.1

Page 601

Nov 01/02

IPL FIG. & ITEM	MATERIAL	FINISH
Clip (260, IPL Fig. 1); (340, IPL Fig. 2); Frame (335A,340A, IPL Fig. 1); (420, 425, IPL Fig. 2)	Al alloy	Chromic acid anodize, Type 1, and apply one coat BMS 10-11, Type 1 primer (F-18.13). Apply BMS 10-60, BAC 707 gray gloss enamel (SRF 14.9813).
Doors (265,270, IPL Fig. 1); (345, 350, IPL Fig. 2)	Al alloy	Chemical treat all surfaces, colored film (F-17.07). Apply one coat BMS 10-11, Type 1 primer on inside surface (F-20.02). Apply one coat BMS 10-79, Type 2 primer on exterior surface (F-19.46).
Bond assembly (315C,320C,315D, 320D, IPL Fig.1); (405,410,405A, 410A, IPL Fig. 2)	Graphite/Epoxy	Apply Dexter 28-C-1 static conditioner plus Dexter 8-W-5 surfacer (SRF-14.672) all over exterior surface. Apply BMS 10-21 Type 1 conductive coating (SRF-14.68) all over exterior surface and trimmed edges. Apply one coat BMS 10-79 Type 2 primer (F-19.46) all over.
Frame (345,345A, 345F,345G,350,350A, 350F,350G,355,355A, 357,357A,360,360A, 363,363A, IPL Fig. 1) (430, 430A,440,440A,450, 455,460,465, IPL Fig. 2)	Al alloy	Chromic acid anodize, type 1, and apply one coat BMS 10-11, type 1 primer (F-18.13). Apply BMS 10-60 BAC 707 gray gloss enamel (SRF-14.9813) except omit enamel from outer flange surface.

Refinish Details  
 Figure 601 (Sheet 2)

# 57-26-32

REPAIR 3-1

01.1 Page 602

Nov 01/02


**BOEING**  
 COMPONENT  
 MAINTENANCE MANUAL

IPL FIG. & ITEM	MATERIAL	FINISH
Frame (345B,345H, 345J,350B,350H, 350J, IPL Fig. 1); (435,445, IPL Fig. 2)	Al alloy	Chromic acid or sulfuric acid anodize (F-17.05). Apply one coat primer, BMS 10-11, Type 1 (F-20.02). Apply enamel, BMS 10-60, color BAC 707 gray gloss (SRF-14.9813).

Refinish Details  
 Figure 601 (Sheet 3)

**57-26-32**

REPAIR 3-1

01.1

Page 603

Nov 01/02

ASSEMBLY1. Materials

NOTE: Equivalent substitutes can be used.

- A. Lockwire -- MS20995C47
- B. Adhesive -- Type 60 (Ref SOPM 20-50-12)
- C. Sealant -- BMS 5-95 (Ref SOPM 20-60-04)
- D. Epoxy Resin -- EA 934 (Ref SOPM 20-50-12)
- E. Epoxy Resin -- FR No. 5312S Resin, No. 5412C Hardener, Fiber-Resin Co., V26348
- F. Epoxy Resin -- BMS 5-109 type 2, class 2 grade A (Ref SOPM 20-50-12)
- G. Mold Release Agent -- Garan 225 (Ref SOPM 20-60-04)
- H. Solvent -- Series 83 (Ref SOPM 20-30-83)
- I. Cheesecloth -- BMS 15-5, class A (Ref SOPM 20-60-04)
- J. Milled Glass Fibers (Ref SOPM 20-60-04)

2. Assembly (IPL Fig. 1)

CAUTION: USE ONLY TITANIUM OR CORROSION RESISTANT STEEL FASTENERS WITH GRAPHITE COMPOSITES. ALUMINUM OR PLATED ALLOY STEEL FASTENERS ARE NOT PERMITTED BECAUSE GALVANIC CORROSION WILL OCCUR.

- A. Use standard industry practices and these steps.
- B. Install blind rivets (305, 310, IPL Fig. 1); (395, 400, IPL Fig. 2) and measure the resistance between conductive finish and bonding fastener per SOPM 20-11-03. Make sure it is a maximum of 300,000 ohms.

**57-26-32**ASSEMBLY  
Page 701  
Jul 01/98

01.1

- C. Install bonding jumper (115, IPL Fig. 1); (150, IPL Fig. 2) and electrically bond the ends per SOPM 20-11-03. Make sure the resistance between door (265, 270, IPL Fig. 1); (345, 350, IPL Fig. 2) and frame (335A, 340A, IPL Fig. 1); (420, 425, IPL Fig. 2) is 0.01 ohm maximum.
- D. Install lockwire MS20995C47 0.50 to 1.50 inches from each end of retainers (20, 22, 90, 95, IPL Fig. 1); (55, 60, 120, 125, IPL Fig. 2) per SOPM 20-50-02.
- E. Bond plugs (13A, 83A, IPL Fig. 1); (25, 95, IPL Fig. 2) to seals (15, 85, IPL Fig. 1); (30, 100, IPL Fig. 2) with Type 60 adhesive per SOPM 20-50-12. Trim plugs as needed.
- F. Fitting assemblies (215, 241, 241G, IPL Fig. 1); (255, 285, 290, IPL Fig. 2).

- (1) Clean with 150-grit or finer sandpaper the surface to be bonded. Do not go through to the fibers. Remove the dust. Mask off the adjacent area to let unwanted adhesive go on the masking tape and not on the surface of the parts.

**NOTE:** Most composite parts will have bondable tedlar film on the inner surface. Do not remove, abrade, grit or sandblast tedlar. Apply adhesive directly over bondable tedlar.

- (2) Apply mold release agent to the fitting assembly. This will permit replacement of the fitting assembly.
- (3) Prepare EA 934 filler by thoroughly mixing 100 parts by weight of A. and 300 parts by weight of B. Add 24 parts by weight of milled glass fibers (1/32 inch length cationic binder) to the resin mix. Optional filler, FR 5312S prepared by mixing 100 parts by weight of FR 5312S epoxy resin and 10 parts by weight hardener 5412C. Add 20 parts by weight of milled glass fibers (per above) to the resin mix.

**WARNING:** THESE RESIN SYSTEMS WILL IRRITATE AND STAIN THE SKIN. THEY ARE FLAMMABLE AND TOXIC. USE PROTECTION. WASH HANDS BEFORE EATING OR SMOKING. USE SUFFICIENT VENTILATION.

- (4) Apply a thin layer (approximately 0.2 inch thick to adjust for resin squeeze-out) of adhesive on the faying surface to be bonded.

**57-26-32**

ASSEMBLY

01.1

Page 702

Nov 01/02

**BOEING**  
COMPONENT  
MAINTENANCE MANUAL

- (5) Put fitting (215, 241, 241G, IPL Fig. 1); (255, 285, 290, IPL Fig. 2) into contact with bond assembly (315C, 315D, 320C, 320D, IPL Fig. 1); (405, 405A, 410, 410A, IPL Fig. 2). Apply pressure slowly with clamps or temporary bolts coated with the mold release agent. Do not use these fasteners in final installation. Use sufficient pressure to squeeze out unwanted resin but not to bend the panel or fitting.
  - (6) Wipe off unwanted resin with a cheesecloth wet with a series 83 solvent.
  - (7) Let the adhesive cure for 3 hours at 70°F minimum. Then cure at 24 hours at 75°F or 3 hours at 130°F.
  - (8) Install bolts (242, IPL Fig. 1); (295, IPL Fig. 2) with wet BMS 5-95 sealant.
- G. Replace shims (167, 177, 295A, IPL Fig. 1); (225, 230, 385, IPL Fig. 2). Adjust their thickness as necessary to get the dimensions you measured during disassembly. Remove 0.003 delaminations as necessary and apply one coat primer, BMS 10-11, Type 1.
- H. Install bolts (220, 242, IPL Fig. 1); (260, 295, IPL Fig. 2) with wet sealant, BMS 5-95.
- I. Install hinge fitting assemblies (135B, 140B, 145C, 150C, IPL Fig. 1); (135, 155, 160, 170, IPL Fig. 2) with fay surface seal of BMS 5-95 sealant between hinge fitting assemblies (135B, 140B, 145C, 150C, IPL Fig. 1); (135, 155, 160, 170, IPL Fig. 2), frame (335A, 340A, IPL Fig. 1); (420, 425, IPL Fig. 2), and shims (167, 177, IPL Fig. 1); (225, 230, IPL Fig. 2).

**57-26-32**ASSEMBLY  
Page 703  
Nov 01/02

01.1





ILLUSTRATED PARTS LIST

1. This section lists and illustrates replaceable or repairable component parts. The Illustrated Parts Catalog contains a complete explanation of the Boeing part numbering system.
2. Indentures show parts relationships as follows:

Assembly

Detail Parts for Assembly

Subassembly

Attaching Parts for Subassembly

Detail Parts for Subassembly

Detail Installation Parts (Included only if installation parts may be returned to shop as part of assembly)

3. One use code letter (A, B, C, etc.) is assigned in the EFF CODE column for each variation of top assembly. All listed parts are used on all top assemblies except when limitations are shown by use code letter opposite individual part entries.
4. Letter suffixes (alpha-variants) are added to item numbers for optional parts, Service Bulletin modification parts, configuration differences (except left- and right-hand parts), product improvement parts, and parts added between two sequential item numbers. The alpha-variant is not shown on illustrations when appearance and location of all variants of the part is the same.
5. Service Bulletin modifications are shown by the notations PRE SB XXXX and POST SB XXXX.
  - A. When a new top assembly part number is assigned by Service Bulletin, the notations appear at the top assembly level only. The configuration differences at detail part level are then shown by use code letter.
  - B. When the top assembly part number is not changed by the Service Bulletin, the notations appear at the detail part level.

6. Parts Interchangeability

Optional  
(OPT)

The parts are optional to and interchangeable with other parts having the same item number.

Supersedes, Superseded By  
(SUPSDS, SUPSD BY)

The part supersedes and is not interchangeable with the original part.

Replaces, Replaced By  
(REPLS, REPLD BY)

The part replaces and is interchangeable with, or is an alternate to, the original part.

**57-26-32**

ILLUSTRATED PARTS LIST

01 Page 1001

Jul 10/83

## 7. Boeing Proprietary Color Coded Parts

Color coded parts are identified with an alpha suffix. These entries represent parts that are of the same configuration, but have different finishes. Orders for color coded parts should include the registry number of the airplane for which the parts are ordered.

**57-26-32**

ILLUSTRATED PARTS LIST

01.1 Page 1002

Nov 01/02


**BOEING**  
 COMPONENT  
 MAINTENANCE MANUAL
VENDORS

OPTK6 SPS TECHNOLOGIES INC AEROSPACE PRODUCTS DIV  
 5195 W 4700 SPO BOX 18459  
 KEARNS, UTAH 84118

06725 AIR INDUSTRIES CORPORATION  
 12570 KNOTT STREET  
 GARDEN GROVE, CALIFORNIA 92641-3932  
 FORMERLY AIR INDUSTRIES OF CALIF IN GARDENA, CALIF.

08524 DEUTSCH FASTENER CORP SEE CODE V97928

15653 FAIRCHILD FASTENERS KAYNAR PRODUCTS DIV  
 800 S STATE COLLEGE BLVD  
 FULLERTON, CALIFORNIA 92831-3001  
 FORMERLY VK6405 MICRODOT AEROSP LTD; FORMERLY KAYNAR TECH  
 KAYNAR DIV

15860 NEW HAMPSHIRE BALL BEARINGS, INCORPORATED ASTRO DIVISION  
 155 LEXINGTON AVENUE  
 LACONIA, NEW HAMPSHIRE 03246-2937  
 FORMERLY ASTRO BEARING CORP, LOS ANGELES, CALIF.

17446 HUCK MFG CO GOV CONTRACTS LOS ANGELES DIV SUB OF FED-MOGUL  
 900 WATSON CENTER ROAD  
 CARSON, CALIFORNIA 90745

5M902 FAIRCHILD IND INC FAIRCHILD AEROSPACE FASTENER DIV  
 3016 W LOMITA BLVD  
 TORRANCE, CALIFORNIA 90505-5103  
 FMLY IN REDONDO BEACH, CALIF

50294 NEW HAMPSHIRE BALL BEARINGS INC  
 9727 DESOTO AVE PO BOX 2515  
 CHATSWORTH, CALIFORNIA 91311-4323  
 FORMERLY NIPPON MINATURE BEARING CORP V23589 AND NMB  
 AMERICA INC AND NMB INC

52825 HOFFMAN CAMERA CORP  
 19 GRAND AVENUE  
 FARMINGTON, NEW YORK 11735-6315

52828 REPUBLIC FASTENER MFG CORP  
 1300 RANCHO CONEJO BLVD  
 NEWBURY PARK, CALIFORNIA 91320-1405  
 FORMERLY IN SYLMAR, CALIFORNIA

57-26-32

 ILLUSTRATED PARTS LIST  
 01.1 Page 1003  
 Nov 01/02

VENDORS

56878 SPS TECHNOLOGIES INC AEROSPACE AND INDUSTRIAL PRODUCTS DIV  
HIGHLAND AVENUE  
JENKINTOWN, PENNSYLVANIA 19046  
FORMERLY STANDARD PRESSED STEEL

60516 WEST COAST AEROSPACE INC  
812 MIRAFLORES STREET  
SAN PEDRO, CALIFORNIA 90731-1439

71087 BOOTS ACFT NUT DIV TOWNSEND CO SEE TEXTRON INC CHERRY  
FASTENER TOWNSEND DIV V11815

72962 HARVARD INDUSTRIES INC  
3 WERNER WAY SUITE 210  
LEBANON, NEW JERSEY 08833  
FORMERLY AMERACE CORP ESNA DIV  
FORMERLY ELASTIC STOP NUT IN UNION, NJ

73197 HI-SHEAR TECHNOLOGY CORP  
2600 SKYPARK DRIVE  
TORRANCE, CALIFORNIA 90509

80539 SPS TECHNOLOGIES INC AEROSPACE PRODUCTS DIV  
2701 SOUTH HARBOR BOULEVARD PO BOX 1259  
SANTA ANA, CALIFORNIA 92702-1259  
FORMERLY NUTT-SHEL DIV OF SPC WESTERN CO V80539  
AND STANDARD PRESSED STEEL WESTERN DIV V17279

9N513 VOI SHAN/CHATSWORTH DIV OF VSI CORP SUB OF FAIRCHILD IND  
CHATSWORTH, CALIFORNIA 91311-5013  
COMPANY NO LONGER WISHES TO BE CONSIDERED FOR FED CONTRCTG

92215 FAIRCHILD IND INC FAIRCHILD AEROSPACE FASTENER DIV  
3010 W LOMITA BLVD  
TORRANCE, CALIFORNIA 90505-5102  
FORMERLY VOI-SHAN IN CULVER CITY, CALIF

97928 HUCK INTL INC  
3969 PARAMOUNT BLVD  
LAKEWOOD, CALIFORNIA 90712-4193

**57-26-32**

ILLUSTRATED PARTS LIST  
01.1 Page 1004  
Nov 01/02


**BOEING**  
 COMPONENT  
 MAINTENANCE MANUAL

PART NUMBER	AIRLINE PART NO.	FIG.	ITEM	TTL REQ
ABWEN05VC		1	185	2
		2	200	2
AG5V29C		1	185	2
		2	200	2
AN960-10L		1	125	6
		2	140	6
AN960XC10L		1	45	2
		1	75	12
		1	105	7
		2	45	2
		2	80	12
		2	110	7
		1	185	2
BACB10EN05GC		2	200	2
		1	230	1
BACB28AM06B008A		1	243	1
		2	270	1
		2	305	1
		1	235	1
BACB28AP04P008		1	243G	1
		2	275	1
		2	310	1
		1	250	7
BACB30LR3-3		2	325	8
		1	252	1
BACB30LR3-4		1	120	1
		2	130	1
BACB30MB6A4		1	123	1
		2	135	1
BACB30MB6A5		1	170	8
		2	185	8
BACB30MY6K3		1	285	2
		1	380	2
BACB30MY8K4		2	370	2
		1	283	2
BACB30MY8K6		1	435	2
		2	365	2
BACB30NM3K3		1	40	2
		2	40	2
BACB30NN3K3		1	65	12
		1	100	7
		2	75	12
		2	105	7
BACB30NN3K3		1	275A	2
		1	385	2
BACB30NW6K3		1	440	2
		2	355	2

57-26-32

ILLUSTRATED PARTS LIST

01.1

Page 1005

Nov 01/02

PART NUMBER	AIRLINE PART NO.	FIG.	ITEM	TTL REQ
BACB30NY8K4		1	220	4
		1	242	4
		2	260	4
		2	295	4
BACB30NY8K6		1	160	16
		2	175	16
BACC30M6		1	175	8
		1	280	2
		1	395	2
		1	450	2
		2	190	8
		2	360	2
BACC30M8		1	165	16
		1	225	4
		1	242G	4
		1	290	2
		1	390	2
		1	445	2
		2	180	16
		2	265	4
		2	300	4
		2	380	2
BACC30X6		1	130	2
		2	145	2
BACJ40A20-4		1	115	1
		2	150	1
BACN10JC3		1	50	2
		1	80	12
		1	110	7
		2	50	2
		2	85	12
		2	115	7
BACN10KE3B2		1	257	8
		2	335	8
BACR15BA3AD		1	255	16
		2	330	16
BACR15BA5AD		1	10	9
BACR15BA5AD		2	20	9
BACR15BA6AD		1	210	19
		1	300	39
		2	235	19
		2	390	39

**57-26-32**

 ILLUSTRATED PARTS LIST  
 01.1 Page 1006  
 Nov 01/02


**BOEING**  
 COMPONENT  
 MAINTENANCE MANUAL

PART NUMBER	AIRLINE PART NO.	FIG.	ITEM	TTL REQ
BACR15BB6AD		1	35	2
		1	213	8
		2	35	2
		2	240	8
		1	333	2
BACR15FT8AD5		2	415	2
		1	295A	1
BACS4OR07C15F		1	400	1
		1	460	1
		2	385	1
		1	177	4
BACS4OR08B18F		2	230	4
		1	167	2
BACS4OR22B44F		2	225	2
		1	257	8
BRFR220A3-2		2	335	8
		1	50	2
BRH10A3		1	80	12
		1	110	7
		2	50	2
		2	85	12
		2	115	7
		1	170	8
		2	185	8
B30MY6K3		1	285	2
		1	380	2
B30MY8K4		2	370	2
		1	283	2
B30MY8K6		1	435	2
		2	365	2
		1	275A	2
		1	385	2
B30NW6K3		1	440	2
		2	355	2
		1	257	8
		2	335	8
F51750-3-2		1	170	8
F51750-3-2		1	170A	8
HL10VAZ6-3		2	185	8
HL10VAZ6-5		1	285	2
HL10VAZ8-4		1	380	2
		2	370	2
HL10VAZ8-6		1	283	2
		1	435	2
		2	365	2

57-26-32

ILLUSTRATED PARTS LIST

01.1

Page 1007

Nov 01/02

PART NUMBER	AIRLINE PART NO.	FIG.	ITEM	TTL REQ
HL11VAZ6-3		1	275A	2
		1	385	2
		1	440	2
HL1187-6		2	355	2
		1	130	2
		2	145	2
HL13VAZ8-4		1	220	4
		1	242	4
		2	260	4
HL13VAZ8-6		2	295	4
		1	160	16
		2	175	16
HL13V4		1	220	4
		1	242	4
		2	260	4
HL13V6		2	295	4
		1	160	16
		2	175	16
HL448UC6-4		1	120	1
HL448UC6-5		2	130	1
		1	123	1
HL79-6		2	135	1
		1	175	8
		1	280	2
HL79-8		1	395	2
		1	450	2
		2	190	8
		2	360	2
		1	165	16
		1	225	4
		1	242G	4
HL79-8		1	290	2
		1	390	2
		1	445	2
		2	180	16
		2	265	4
HL87-6		2	300	4
		2	380	2
		1	130	2
H10-3BAC		2	145	2
		1	50	2
		1	80	12
		1	110	7
		2	50	2
		2	85	12
		2	115	7

# 57-26-32

 ILLUSTRATED PARTS LIST  
 01.1 Page 1008  
 Nov 01/02




**BOEING**  
 COMPONENT  
 MAINTENANCE MANUAL

PART NUMBER	AIRLINE PART NO.	FIG.	ITEM	TTL REQ
L801-8K4		1	220	4
		1	242	4
		2	260	4
		2	295	4
		2	295	4
L801-8K6		1	160	16
		2	175	16
L803-6K3		1	275A	2
		1	385	2
		1	440	2
		2	355	2
MS15001-1		1	180	2
		2	195	2
NAS1399MW6-4		1	305	2
		2	395	2
NAS1399MW6-5		1	310	2
		2	400	2
NS103191-02-2		1	257	8
		2	335	8
NS202101-02		1	50	2
		1	80	12
NS202101-02		1	110	7
		2	50	2
		2	85	12
		2	115	7
RMF9213-2-3		1	257	8
		2	335	8
RMLH9075-3W		1	50	2
		1	80	12
		1	110	7
		2	50	2
		2	85	12
		2	115	7
T6S1032J		1	50	2
		1	80	12
		1	110	7
		2	50	2
		2	85	12
		2	115	7
VN303A02		1	50	2
		1	80	12
		1	110	7
		2	50	2
		2	85	12
		2	115	7

57-26-32

ILLUSTRATED PARTS LIST

01.1

Page 1009

Nov 01/02

PART NUMBER	AIRLINE PART NO.	FIG.	ITEM	TTL REQ
WC4486-4		1	120	1
		2	130	1
WC4486-5		1	123	1
		2	135	1
113T1803-1		1	260	1
		2	340	1
113T1813-1		1	265	1
		2	345	1
113T1813-2		1	270	1
		2	350	1
113T1822-11		1	200	1
		2	245	1
113T1822-12		1	205	1
		2	250	1
113T1822-14		1	22	1
		2	60	1
113T1822-19SP		1	1B	RF
113T1822-20SP		1	5B	RF
113T1822-21		1	1C	RF
113T1822-22		1	5C	RF
113T1822-23		1	287	1
		2	455	1
		2	375	2
113T1822-24		1	13A	2
		1	83A	2
		2	25	2
		2	95	2
113T1822-25SP		1	1D	RF
		2	1	RF
113T1822-26SP		1	5D	RF
		2	5	RF
113T1822-27		1	1E	RF
113T1822-28		1	5E	RF
113T1822-29SP		1	1F	RF
113T1822-3		1	55	1
		2	87	1
113T1822-30SP		1	5F	RF
113T1822-31		1	1G	RF
113T1822-32		1	5G	RF
113T1822-33		1	1H	RF
113T1822-34		1	5H	RF
113T1822-35		1	1J	RF
113T1822-36		1	5J	RF
113T1822-37G		1	1K	RF

57-26-32

 ILLUSTRATED PARTS LIST  
 01.1 Page 1010  
 Nov 01/02


**BOEING**  
 COMPONENT  
 MAINTENANCE MANUAL

PART NUMBER	AIRLINE PART NO.	FIG.	ITEM	TTL REQ
113T1822-38G		1	5K	RF
113T1822-39		1	425	1
113T1822-4		1	60	1
		2	90	1
113T1822-40		1	430	1
113T1822-41		1	370	1
113T1822-42		1	375	1
113T1822-5		1	90	1
		2	120	1
113T1822-5001		2	10	1
113T1822-5002		2	15	1
113T1822-5003		2	10A	1
113T1822-5004		2	15A	1
113T1822-6		1	95	1
		2	125	1
113T1822-7		1	15	1
		2	30	1
113T1822-8		1	85	1
		2	100	1
113T1822-9		1	20	1
		2	55	1
113T1824-1		1	345B	1
		2	435	1
113T1824-2		1	350B	1
		2	445	1
113T1824-5		1	345H	1
113T1824-6		1	350H	1
113T1830-1		1	215	1
		2	255	1
113T1830-10		1	244G	1
		2	320	1

57-26-32

ILLUSTRATED PARTS LIST

01.1

Page 1011

Nov 01/02

PART NUMBER	AIRLINE PART NO.	FIG.	ITEM	TTL REQ
113T1830-2		1	240	1
		2	280	1
113T1830-7		1	241	1
		2	285	1
113T1830-8		1	241G	1
		2	290	1
113T1830-9		1	244	1
		2	315	1
113T1833-29		1	145C	1
		2	165	1
113T1833-30		1	150C	1
		2	170	1
113T1833-31		1	195F	1
		2	215	1
113T1833-32		1	197	1
		2	220	1
113T1833-41		1	135B	1
		2	155	1
113T1833-42		1	140B	1
		2	160	1
113T1833-43		1	190D	1
		2	205	1
113T1833-44		1	190E	1
		2	210	1
113T1844-1		1	25	1
		2	65	1
113T1844-2		1	30	1
		2	70	1
113T1862-11		1	315C	1
		2	405	1
113T1862-12		1	320C	1
		2	410	1
113T1862-13		1	315D	1
113T1862-13		2	405A	1
113T1862-14		1	320D	1
		2	410A	1

# 57-26-32

 ILLUSTRATED PARTS LIST  
 01.1 Page 1012  
 Nov 01/02


**BOEING**  
 COMPONENT  
 MAINTENANCE MANUAL

PART NUMBER	AIRLINE PART NO.	FIG.	ITEM	TTL REQ
113T1886-1		1	345	1
		1	465	1
		2	430	1
113T1886-2		1	350	1
		1	470	1
		2	440	1
113T1886-3		1	355	1
		1	475	1
		2	450	1
113T1886-4		1	360	1
		1	480	1
		2	460	1
113T1886-5		1	345A	1
		1	405	1
		2	430A	1
113T1886-6		1	350A	1
		1	410	1
		2	440A	1
113T1886-7		2	465	1
		1	357	1
		1	415	1
113T1886-8		2	455	1
		1	363	1
		1	420	1
113T1888-3		1	335A	1
		2	420	1
113T1888-4		1	340A	1
		2	425	1
66014-6		1	175	8
		1	280	2
		1	395	2
		1	450	2
		2	190	8

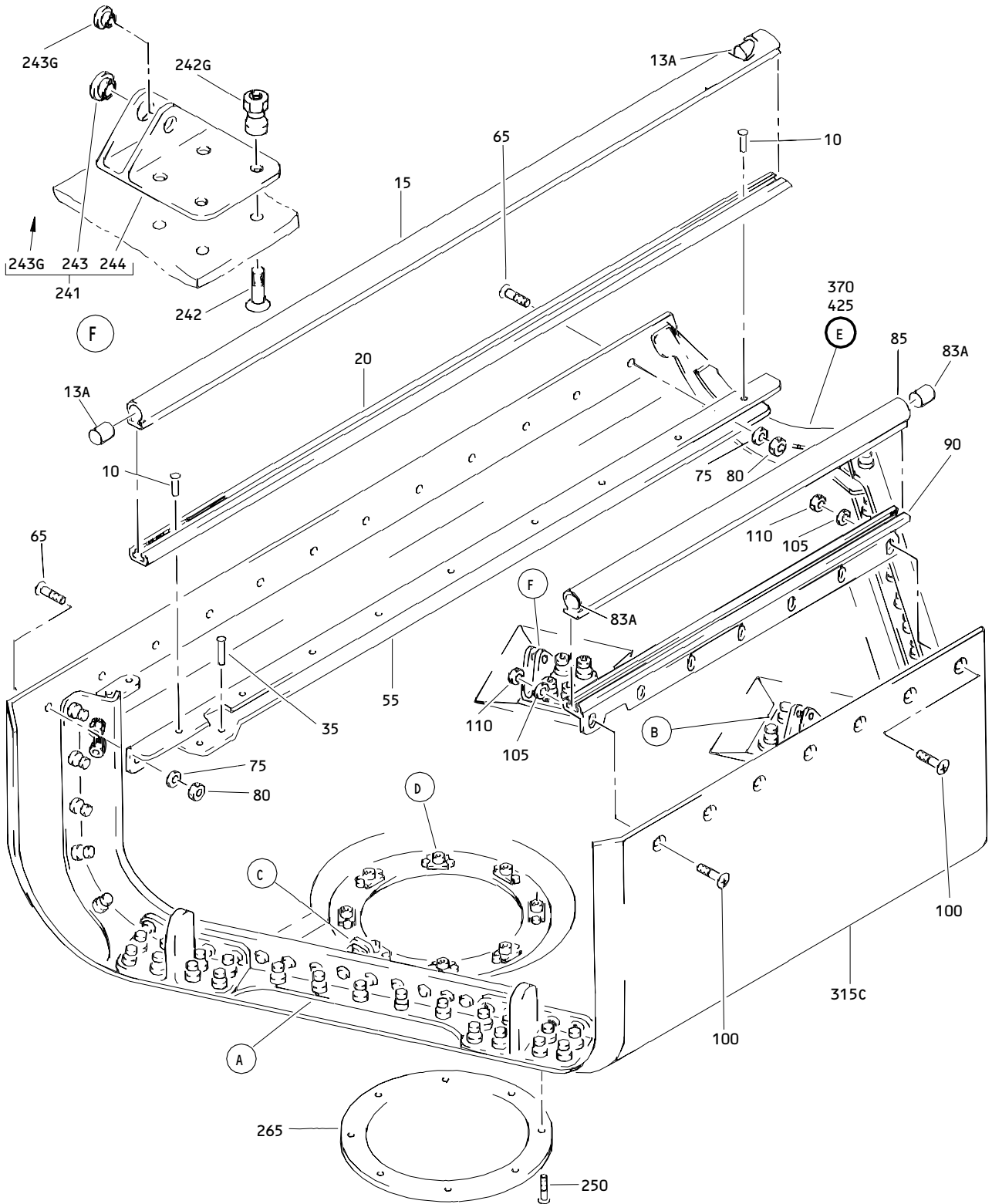
# 57-26-32

 ILLUSTRATED PARTS LIST  
 01.1 Page 1013  
 Nov 01/02

PART NUMBER	AIRLINE PART NO.	FIG.	ITEM	TTL REQ		
66014-6 66014-8		2	360	2		
		1	165	16		
		1	225	4		
		1	242G	4		
		1	290	2		
		1	390	2		
		1	445	2		
		2	180	16		
		2	265	4		
		2	300	4		
		2	380	2		
		69308-6A4		1	120	1
				2	130	1
		69308-6A5		1	123	1
2	135			1		
96-02		1	50	2		
		1	80	12		
		1	110	7		
		2	50	2		
		2	85	12		
		2	115	7		

**57-26-32**

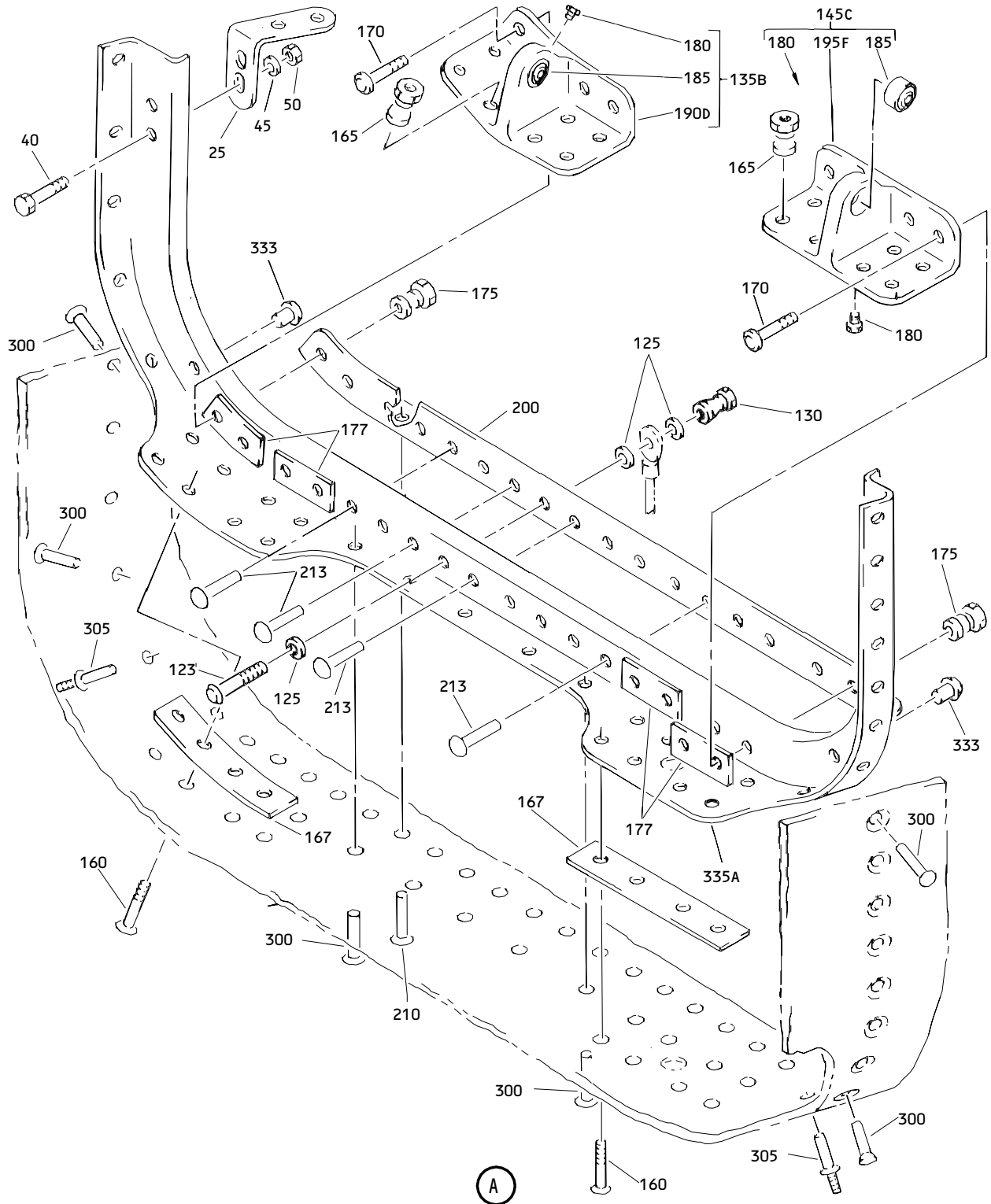
 ILLUSTRATED PARTS LIST  
 01.1 Page 1014  
 Nov 01/02



Outboard Trailing Edge Flap No. 2 Mid Fairing Assembly  
 Figure 1 (Sheet 1)

**57-26-32**

ILLUSTRATED PARTS LIST  
 01.1 Page 1015  
 Nov 01/02

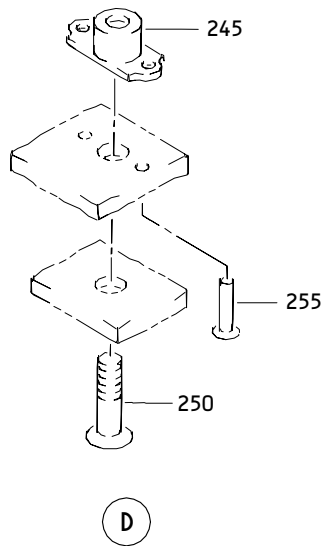
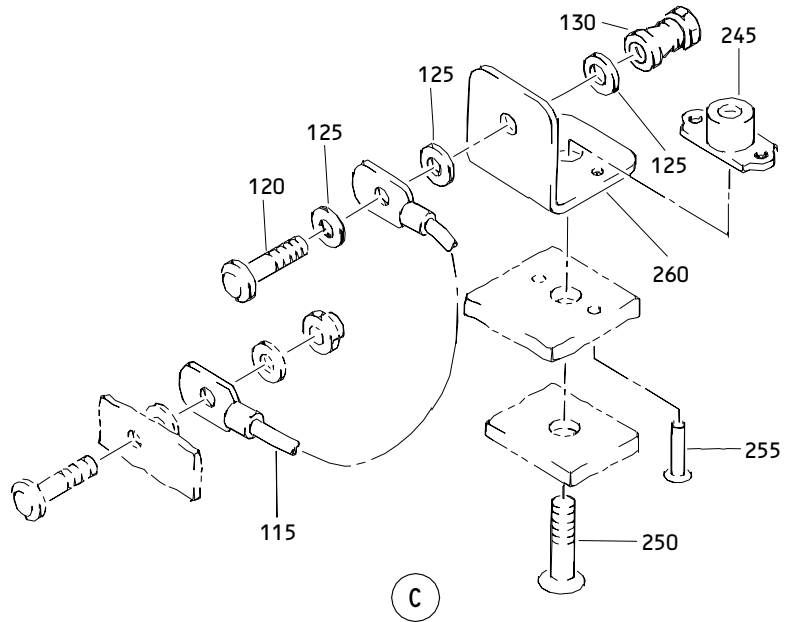
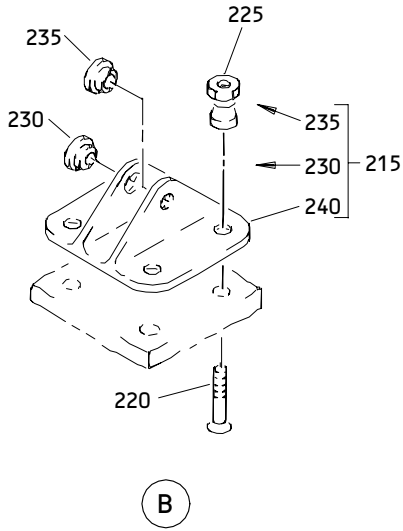


Outboard Trailing Edge Flap No. 2 Mid Fairing Assembly  
 Figure 1 (Sheet 2)

**57-26-32**

ILLUSTRATED PARTS LIST  
 01.1 Page 1016  
 Nov 01/02

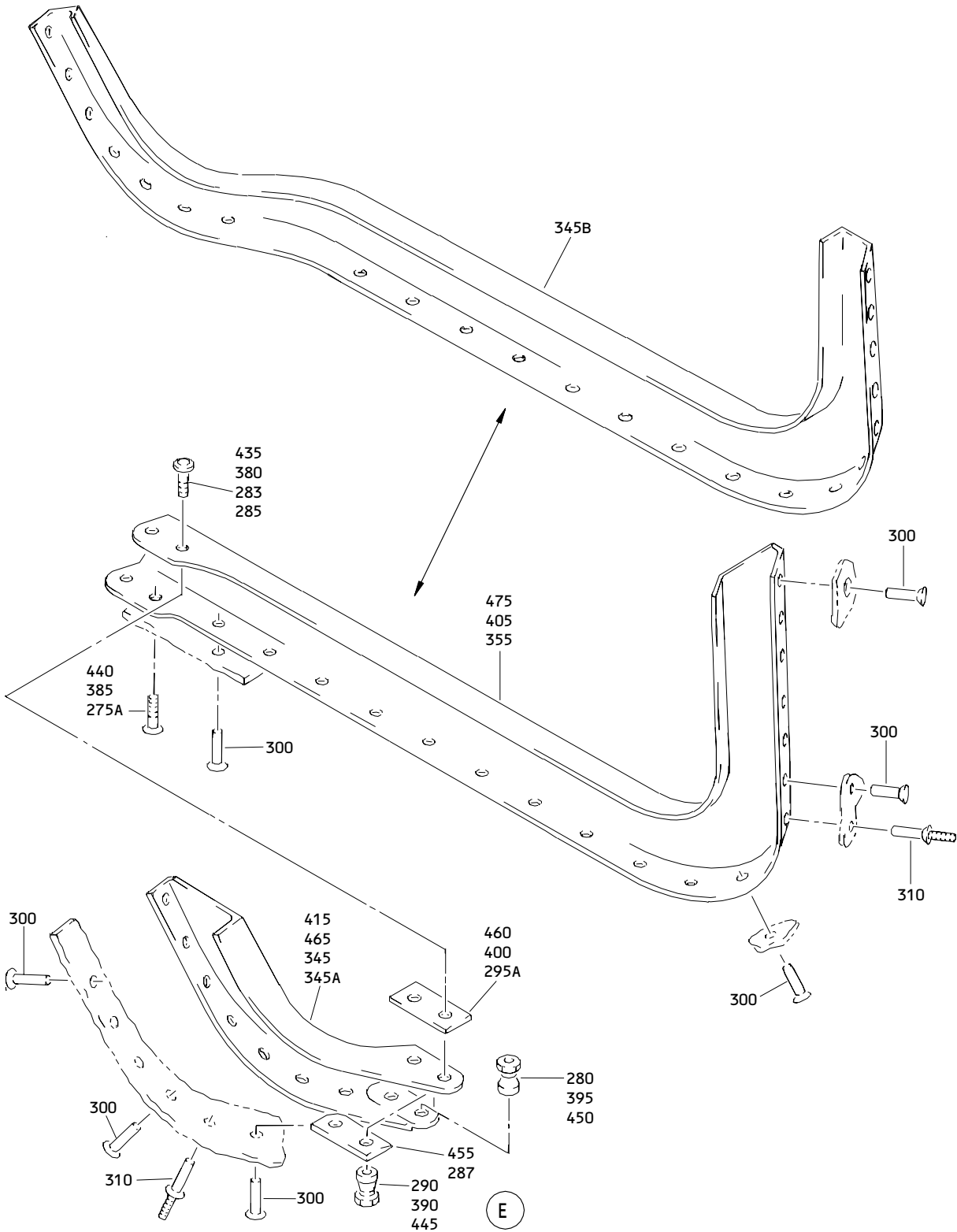




Outboard Trailing Edge Flap No. 2 Mid Fairing Assembly  
Figure 1 (Sheet 3)

**57-26-32**

ILLUSTRATED PARTS LIST  
01.1 Page 1017  
Nov 01/02



Outboard Trailing Edge Flap No. 2 Mid Fairing Assembly  
 Figure 1 (Sheet 4)

**57-26-32**

ILLUSTRATED PARTS LIST  
 01.1 Page 1018  
 Nov 01/02


**BOEING**  
 COMPONENT  
 MAINTENANCE MANUAL

FIG. & ITEM	PART NO.	AIRLINE PART NUMBER	NOMENCLATURE 1234567	EFF CODE	QTY PER ASSY
01-					
-1	113T1822-1SP		DELETED		
-1A	113T1822-17SP		DELETED		
-1B	113T1822-19SP		FAIRING ASSY-OUTBD TE FLAP NO. 2 MID (LH)	A	RF
-1C	113T1822-21		FAIRING ASSY-OUTBD TE FLAP NO. 2 MID (VARIABLE) (LH)	C	RF
-1D	113T1822-25SP		FAIRING ASSY-OUTBD TE FLAP NO. 2 MID (LH)	E	RF
-1E	113T1822-27		(FOR DETAILS SEE FIG. 2) FAIRING ASSY-OUTBD TE FLAP NO. 2 MID (VARIABLE) (LH)	F	RF
-1F	113T1822-29SP		FAIRING ASSY-OUTBD TE FLAP NO. 2 MID (LH)	J	RF
R -1G	113T1822-31		FAIRING ASSY-OUTBD TE FLAP NO. 2 MID (VARIABLE) (LH)	L	RF
R -1H	113T1822-33		FAIRING ASSY-OUTBD TE FLAP NO. 2 MID (VARIABLE) (LH)	N	RF
R -1J	113T1822-35		FAIRING ASSY-OUTBD TE FLAP NO. 2 MID (LH)	Q	RF
R -1K	113T1822-37G		FAIRING ASSY-OUTBD TE FLAP NO. 2 MID (LH)	S	RF
-5	113T1822-2SP		DELETED		
-5A	113T1822-18SP		DELETED		
-5B	113T1822-20SP		FAIRING ASSY-OUTBD TE FLAP NO. 2 MID (RH)	B	RF
-5C	113T1822-22		FAIRING ASSY-OUTBD TE FLAP NO. 2 MID (VARIABLE) (RH)	D	RF
-5D	113T1822-26SP		FAIRING ASSY-OUTBD TE FLAP NO. 2 MID (RH)	G	RF
-5E	113T1822-28		(FOR DETAILS SEE FIG. 2) FAIRING ASSY-OUTBD TE FLAP NO. 2 MID (VARIABLE) (RH)	H	RF
-5F	113T1822-30SP		FAIRING ASSY-OUTBD TE FLAP NO. 2 MID (RH)	K	RF
R -5G	113T1822-32		FAIRING ASSY-OUTBD TE FLAP NO. 2 MID (VARIABLE) (RH)	M	RF
-5H	113T1822-34		FAIRING ASSY-OUTBD TE FLAP NO. 2 MID (VARIABLE) (RH)	P	RF
R -5J	113T1822-36		FAIRING ASSY-OUTBD TE FLAP NO. 2 MID (RH)	R	RF
R -5K	113T1822-38G		FAIRING ASSY-OUTBD TE FLAP NO. 2 MID (RH)	T	RF

57-26-32

 ILLUSTRATED PARTS LIST  
 01.1 Page 1019  
 Nov 01/02

FIG. & ITEM	PART NO.	AIRLINE PART NUMBER	NOMENCLATURE 1234567	EFF CODE	QTY PER ASSY
01-10	BACR15BA5AD		.RIVET- (SIZE DETERMINE ON INST)	A-D,F ,H-T	9
R 13	149T6906-53		DELETED		
13A	113T1822-24		.PLUG- (MFD FROM SH RUBBER BMS 1-23 .875 DIA X 207)	A-D,F ,H-T	2
15	113T1822-7		.SEAL- (MFD FROM EXTR RUBBER 10-60754-718 36.6 IN.)	A-D,F ,H-T	1
20	113T1822-9		.RETAINER	A,C,F ,J,L, N,Q,S	1
-22	113T1822-14		.RETAINER	B,D,H ,K,M, P,R,T	1
25	113T1844-1		.CLIP	A,C,F ,J,L, N,Q,S	1
-30	113T1844-2		.CLIP	B,D,H ,K,M, P,R,T	1
35	BACR15BB6AD		ATTACHING PARTS .RIVET- (SIZE DETERMINE ON INST)	A-D,F ,H-T	2
40	BACB30NM3K3		.BOLT	A-D,F ,H-T	2
45	AN960XC10L		.WASHER	A-D,F ,H-T	2
50	H10-3BAC		.NUT- (V15653) (SPEC BACN10JC3) (OPT NS202101-02 (V80539)) (OPT RMLH9075-3W (V72962)) (OPT T6S1032J (V71087)) (OPT VN303A02 (V92215)) (OPT 96-02 (V80539)) (OPT BRH10A3 (V52828)) -----*	A-D,F ,H-T	2

57-26-32

ILLUSTRATED PARTS LIST

01.1

Page 1020

Nov 01/02

**BOEING**  
 COMPONENT  
 MAINTENANCE MANUAL

FIG. & ITEM	PART NO.	AIRLINE PART NUMBER	NOMENCLATURE 1234567	EFF CODE	QTY PER ASSY
01-55	113T1822-3		.BEAM	A,C,F J,L N,Q,S	1
-60	113T1822-4		.BEAM	B,D,H K,M P,R,T	1
65	BACB30NN3K3		ATTACHING PARTS .BOLT	A-D,F H-T	12
70	BACB30NN3K5		DELETED		
73	BACS40R08B08F		DELETED		
75	AN960XC10L		.WASHER	A-D,F H-T	12
80	H10-3BAC		.NUT- (V15653) (SPEC BACN10JC3) (OPT NS202101-02 (V80539)) (OPT RMLH9075-3W (V72962)) (OPT T6S1032J (V71087)) (OPT VN303A02 (V92215)) (OPT 96-02 (V80539)) (OPT BRH10A3 (V52828)) -----*	A-D,F H-T	12

**57-26-32**

ILLUSTRATED PARTS LIST  
 01.1 Page 1021  
 Nov 01/02

FIG. & ITEM	PART NO.	AIRLINE PART NUMBER	NOMENCLATURE 1234567	EFF CODE	QTY PER ASSY
R	01-83	149T6906-53	DELETED		
	83A	113T1822-24	.PLUG- (MFD FROM SH RUBBER BMS 1-23 .875 DIA X 2.7)	A-D,F ,H-T	2
	85	113T1822-8	.SEAL- (MFD FROM EXTR RUBBER 10-60754-718 22.00 IN.)	A-D,F ,H-T	1
	90	113T1822-5	.RETAINER	A,C,F ,J,L, N,Q,S	1
	-95	113T1822-6	.RETAINER	B,D,H ,K,M, P,R,T	1
	100	BACB30NN3K3	ATTACHING PARTS .BOLT	A-D,F ,H-T	7
	105	AN960XC10L	.WASHER	A-D,F ,H-T	7
	110	H10-3BAC	.NUT- (V15653) (SPEC BACN10JC3) (OPT NS202101-02 (V80539)) (OPT RMLH9075-3W (V72962)) (OPT T6S1032J (V71087)) (OPT VN303A02 (V92215)) (OPT 96-02 (V80539)) (OPT BRH10A3 (V52828)) -----*	A-D,F ,H-T	7

57-26-32

 ILLUSTRATED PARTS LIST  
 01.1 Page 1022  
 Nov 01/02

**BOEING**  
 COMPONENT  
 MAINTENANCE MANUAL

FIG. & ITEM	PART NO.	AIRLINE PART NUMBER	NOMENCLATURE 1234567	EFF CODE	QTY PER ASSY
01-115	BACJ40A20-4		. JUMPER	A-D, F H-T	1
120	HL448UC6-4		ATTACHING PARTS . BOLT- (V56878) (SPEC BACB30MB6A4) (OPT HL448UC6-4 (V73197)) (OPT HL448UC6-4 (V92215)) (OPT HL448UC6-4 (V97928)) (OPT 69308-6A4 (V56878)) (OPT HL448UC6-4 (V80539)) (OPT HL448UC6-4 (V08524)) (OPT HL448UC6-4 (V9N513)) (OPT WC4486-4 (V60516))	A-D, F H-T	1
123	HL448UC6-5		. BOLT- (V56878) (SPEC BACB30MB6A5) (OPT HL448UC6-5 (V73197)) (OPT HL448UC6-5 (V92215)) (OPT HL448UC6-5 (V97928)) (OPT 69308-6A5 (V56878)) (OPT HL448UC6-5 (V80539)) (OPT HL448UC6-5 (V08524)) (OPT HL448UC6-5 (V9N513)) (OPT WC4486-5 (V60516))	A-D, F H-T	1

**57-26-32**

ILLUSTRATED PARTS LIST  
 01.1 Page 1023  
 Nov 01/02

FIG. & ITEM	PART NO.	AIRLINE PART NUMBER	NOMENCLATURE 1234567	EFF CODE	QTY PER ASSY
01-125	AN960-10L		.WASHER	A-D,F ,H-T	6
130	HL1187-6		.COLLAR- (V73197) (SPEC BACC30X6) (OPT HL87-6 (V73197)) (OPT HL87-6 (V92215)) (OPT HL1187-6 (V56878)) (OPT HL1187-6 (V92215)) (OPT HL87-6 (V56878)) (OPT HL1187-6 (V5M902)) -----*-----	A-D,F ,H-T	2
135	113T1833-9		DELETED		
135A	113T1833-25		DELETED		
135B	113T1833-41		.FITTING ASSY-HINGE	A,C,F ,J,L, N,Q,S	1
-140	113T1833-10		DELETED		
-140A	113T1833-26		DELETED		
-140B	113T1833-42		.FITTING ASSY-HINGE	B,D,H ,K,M, P,R,T	1
145	113T1833-13		DELETED		
145A	113T1833-29		DELETED		
145B	113T1833-45		DELETED		
145C	113T1833-29		.FITTING ASSY-HINGE	A,C,F ,J,L, N,Q,S	1
-150	113T1833-14		DELETED		
-150A	113T1833-30		DELETED		
-150B	113T1833-46		DELETED		
-150C	113T1833-30		.FITTING ASSY-HINGE	B,D,H ,K,M, P,R,T	1
			ATTACHING PARTS		

57-26-32

ILLUSTRATED PARTS LIST

01.1

Page 1024

Nov 01/02




**BOEING**  
 COMPONENT  
 MAINTENANCE MANUAL

FIG. & ITEM	PART NO.	AIRLINE PART NUMBER	NOMENCLATURE 1234567	EFF CODE	QTY PER ASSY
01-160	HL13VAZ8-6		.BOLT- (V56878) (SPEC BACB30NY8K6) (OPT HL13VAZ8-6 (V73197)) (OPT HL13VAZ8-6 (V92215)) (OPT HL13VAZ8-6 (V97928)) (OPT L801-8K6 (V06725)) (OPT HL13VAZ8-6 (V08524)) (OPT HL13V6 (V06725)) (OPT HL13VAZ8-6 (V17446))	A-D,F ,H-T	16
R 165	HL79-8		.COLLAR- (V56878) (SPEC BACC30M8) (OPT HL79-8 (V73197)) (OPT HL79-8 (V92215)) (OPT 66014-8 (V56878)) (OPT HL79-8 (V5M902))	A-D,F ,H-T	16
165A	HL1187-8		DELETED		
167	BACS40R22B44F		.SHIM	A-D,F ,H-T	AR
170	HL10VAZ6-3		.BOLT- (V60516) (SPEC BACB30MY6K3) (OPT B30MY6K3 (V97928))	A-D	8
-170A	HL10VAZ6-5		.BOLT- (V60516) (SPEC BACB30MY6K5) (OPT B30MY6K5 (V97928))	F,H-T	8

57-26-32

ILLUSTRATED PARTS LIST

01.1

Page 1025

Nov 01/02

FIG. & ITEM	PART NO.	AIRLINE PART NUMBER	NOMENCLATURE 1234567	EFF CODE	QTY PER ASSY
01-175	HL79-6		.COLLAR- (V56878) (SPEC BACC30M6) (OPT HL79-6 (V73197)) (OPT HL79-6 (V92215)) (OPT 66014-6 (V56878)) (OPT HL79-6 (V5M902))	A-D,F ,H-T	8
177	BACS40R08B18F		.SHIM  -----*-----	A-D,F ,H-T	AR
180	MS15001-1		..FITTING	A-D,F ,H-T	1
185	ABWEN05VC		..BEARING- (V50294) (SPEC BACB10EN05GC) (OPT AG5V29C (V15860))	A-D,F ,H-T	1
190	113T1833-11		DELETED		
-190A	113T1833-12		DELETED		
190B	113T1833-27		DELETED		
-190C	113T1833-28		DELETED		
190D	113T1833-43		..FITTING- (USED ON ITEM 135B)	A,C,F ,J,L, N,Q,S	1
-190E	113T1833-44		..FITTING- (USED ON ITEM 140B)	B,D,H ,K,M, P,R,T	1
195	113T1833-15		DELETED		
-195A	113T1833-16		DELETED		
195B	113T1833-31		DELETED		
-195C	113T1833-32		DELETED		
195D	113T1833-47		DELETED		
-195E	113T1833-48		DELETED		
195F	113T1833-31		..FITTING- (USED ON ITEM 145C)	A,C,F ,J,L, N,Q,S	1

57-26-32

 ILLUSTRATED PARTS LIST  
 01.1 Page 1026  
 Nov 01/02


**BOEING**  
 COMPONENT  
 MAINTENANCE MANUAL

FIG. & ITEM	PART NO.	AIRLINE PART NUMBER	NOMENCLATURE 1234567	EFF CODE	QTY PER ASSY
01- -197	113T1833-32		..FITTING- (USED ON ITEM 150C)	B,D,H ,K,M, P,R,T	1
200	113T1822-11		.ANGLE	A,C,F ,J,L, N,Q,S	1
-205	113T1822-12		.ANGLE	B,D,H ,K,M, P,R,T	1
210	BACR15BA6AD		ATTACHING PARTS .RIVET- (SIZE DETERMINE ON INST)	A-D,F ,H-T	19
213	BACR15BB6AD		.RIVET- (SIZE DETERMINE ON INST)	A-D,F ,H-T	8
215	113T1830-1		-----*----- .FITTING ASSY-SPRT	A-D,F ,H-T	1
220	HL13VAZ8-4		ATTACHING PARTS .BOLT- (V56878) (SPEC BACB30NY8K4) (OPT HL13VAZ8-4 (V73197)) (OPT HL13VAZ8-4 (V92215)) (OPT HL13VAZ8-4 (V97928)) (OPT L801-8K4 (V06725)) (OPT HL13VAZ8-4 (V08524)) (OPT HL13V4 (V06725)) (OPT HL13VAZ8-4 (V17446))	A-D,F ,H-T	4

57-26-32

ILLUSTRATED PARTS LIST

01.1

Page 1027

Nov 01/02

FIG. & ITEM	PART NO.	AIRLINE PART NUMBER	NOMENCLATURE 1234567	EFF CODE	QTY PER ASSY
R 01-225	HL79-8		.COLLAR- (V56878) (SPEC BACC30M8) (OPT HL79-8 (V73197)) (OPT HL79-8 (V92215)) (OPT 66014-8 (V56878)) (OPT HL79-8 (V5M902))	A-D,F ,H-T	4
225A	HL1187-8		DELETED		
230	BACB28AM06B008A		..BUSHING	A-D,F ,H-T	1
235	BACB28AP04P008		..BUSHING	A-D,F ,H-T	1
240	113T1830-2		..FITTING-LINK	A-D,F ,H-T	1
241	113T1830-7		.FITTING ASSY	A,C,F ,J,L, N,Q,S	1
-241G	113T1830-8		.FITTING ASSY	B,D,H ,K,M, P,R,T	1
242	HL13VAZ8-4		.BOLT- (V56878) (SPEC BACB30NY8K4) (OPT HL13VAZ8-4 (V73197)) (OPT HL13VAZ8-4 (V92215)) (OPT HL13VAZ8-4 (V97928)) (OPT L801-8K4 (V06725)) (OPT HL13VAZ8-4 (V08524)) (OPT HL13V4 (V06725)) (OPT HL13VAZ8-4 (V17446))	A-D,F ,H-T	4

57-26-32

ILLUSTRATED PARTS LIST

01.1

Page 1028

Nov 01/02

**BOEING**  
 COMPONENT  
 MAINTENANCE MANUAL

FIG. & ITEM	PART NO.	AIRLINE PART NUMBER	NOMENCLATURE 1234567	EFF CODE	QTY PER ASSY
R 01-242G	HL79-8		.COLLAR- (V56878) (SPEC BACC30M8) (OPT HL79-8 (V73197)) (OPT HL79-8 (V92215)) (OPT 66014-8 (V56878)) (OPT HL79-8 (V5M902))	A-D,F ,H-T	4
242H	HL1187-8		DELETED		
243	BACB28AM06B008A		..BUSHING	A-D,F ,H-T	1
243G	BACB28AP04P008		..BUSHING	A-D,F ,H-T	1
244	113T1830-9		..FITTING-LINK	A,C,F ,J,L, N,Q,S	1
-244G	113T1830-10		..FITTING-LINK	B,D,H ,K,M, P,R,T	1
R 245	NS103191-02-2		DELETED		
R 250	BACB30LR3-3		.BOLT	A-D,F ,H-T	7
R 252	BACB30LR3-4		.BOLT	A-D,F ,H-T	1
R 255	BACR15BA3AD		.RIVET- (SIZE DETERMINE ON INST)	A-D,F ,H-T	16
R 257	NS103191-02-2		.NUTPLATE- (V80539) (SPEC BACN10KE3B2) (OPT F51750-3-2 (V15653)) (OPT RMF9213-2-3 (V72962)) (OPT BRFR220A3-2 (V52825))	A-D,F ,H-T	8

**57-26-32**

ILLUSTRATED PARTS LIST  
 01.1 Page 1029  
 Nov 01/02

FIG. & ITEM	PART NO.	AIRLINE PART NUMBER	NOMENCLATURE 1234567	EFF CODE	QTY PER ASSY
01-260	113T1803-1		.CLIP	A-D,F ,H-T	1
265	113T1813-1		.DOOR	A,C,F ,J,L, N,Q,S	1
-270	113T1813-2		.DOOR	B,D,H ,K,M, P,R,T	1
275 275A	HL13VAZ6-6 HL11VAZ6-3		DELETED .BOLT- (V56878) (SPEC BACB30NW6K3) (OPT B30NW6K3 (V97928)) (OPT HL11VAZ6-3 (V73197)) (OPT HL11VAZ6-3 (V92215)) (OPT HL11VAZ6-3 (V97928)) (OPT L803-6K3 (V06725)) (OPT HL11VAZ6-3 (VOPTK6)) (OPT HL11VAZ6-3 (V60516)) (LIMITED) (ITEMS 345 AND 355 TOGETHER WITH ITEMS 275A, 280, 283, 287, 290 AND 295A OR ITEMS 345A AND 357 TOGETHER WITH ITEMS 275A, 280, 285, 290, 295A OPT TO ITEM 345B) (ITEMS 350 AND 360 TOGETHER WITH ITEMS 275A, 280, 283, 287, 290 AND 295A OR ITEMS 350A AND 363 TOGETHER WITH ITEMS 275A, 280, 285, 290, 295A OPT TO ITEM 350B)	A-D,F ,H-P	2

# 57-26-32

ILLUSTRATED PARTS LIST

01.1

Page 1030

Nov 01/02


**BOEING**  
 COMPONENT  
 MAINTENANCE MANUAL

FIG. & ITEM	PART NO.	AIRLINE PART NUMBER	NOMENCLATURE 1234567	EFF CODE	QTY PER ASSY
R 01- -275B	HL11VAZ6-3		.BOLT- (V56878) (SPEC BACB30NW6K3) (OPT B30NW6K3 (V97928)) (OPT HL11VAZ6-3 (V73197)) (OPT HL11VAZ6-3 (V92215)) (OPT HL11VAZ6-3 (V97928)) (OPT L803-6K3 (V06725)) (OPT HL11VAZ6-3 (V0PTK6)) (OPT HL11VAZ6-3 (V60516)) (ITEMS 345F AND 355A TOGETHER WITH ITEMS 287A, (2) 283A, (2) 275B, (2) 290A, (2) 280A AND 295B OR ITEMS 345G AND 357A TOGETHER WITH ITEMS (2) 285A, (2) 275B, (2) 290A, (2) 280A AND 295B OPT TO ITEM 345H) (ITEMS 350F AND 360A TOGETHER WITH ITEMS 287A, (2) 283A, (2) 275B, (2) 290A, (2) 280A AND 295B OR ITEMS 350G AND 363A TOGETHER WITH ITEMS (2) 285A, (2) 275B, (2) 290A, (2) 280A AND 295B OPT TO ITEM 350H)	Q,R	2

57-26-32

ILLUSTRATED PARTS LIST

01.1

Page 1031

Nov 01/02

FIG. & ITEM	PART NO.	AIRLINE PART NUMBER	NOMENCLATURE	EFF CODE	QTY PER ASSY
01-280	HL79-6		1234567 .COLLAR- (V56878) (SPEC BACC30M6) (OPT HL79-6 (V73197)) (OPT HL79-6 (V92215)) (OPT 66014-6 (V56878)) (OPT HL79-6 (V5M902)) (LIMITED) (ITEMS 345 AND 355 TOGETHER WITH ITEMS 275A, 280, 283, 287, 290 AND 295A OR ITEMS 345A AND 357 TOGETHER WITH ITEMS 275A, 280, 285, 290, 295A OPT TO ITEM 345B) (ITEMS 350 AND 360 TOGETHER WITH ITEMS 275A, 280, 283, 287, 290 AND 295A OR ITEMS 350A AND 363 TOGETHER WITH ITEMS 275A, 280, 285, 290, 295A OPT TO ITEMS 350B)	A-D,F ,H-P	2

**57-26-32**

 ILLUSTRATED PARTS LIST  
 01.1 Page 1032  
 Nov 01/02




**BOEING**  
 COMPONENT  
 MAINTENANCE MANUAL

FIG. & ITEM	PART NO.	AIRLINE PART NUMBER	NOMENCLATURE 1234567	EFF CODE	QTY PER ASSY
R 01-280A	HL79-6		.COLLAR- (V56878) (SPEC BACC30M6) (OPT HL79-6 (V73197)) (OPT HL79-6 (V92215)) (OPT 66014-6 (V56878)) (OPT HL79-6 (V5M902)) (ITEMS 345F AND 355A TOGETHER WITH ITEMS 287A, (2) 283A, (2) 275B, (2) 290A, (2) 280A AND 295B OR ITEMS 345G AND 357A TOGETHER WITH ITEMS (2) 285A, (2) 275B, (2) 290A, (2) 280A AND 295B OPT TO ITEM 345H) (ITEMS 350F AND 360A TOGETHER WITH ITEMS 287A, (2) 283A, (2) 275B, (2) 290A, (2) 280A AND 295B OR ITEMS 350G AND 363A TOGETHER WITH ITEMS (2) 285A, (2) 275B, (2) 290A, (2) 280A AND 295B OPT TO ITEM 350H)	Q,R	2

# 57-26-32

 ILLUSTRATED PARTS LIST  
 01.1 Page 1033  
 Nov 01/02

FIG. & ITEM	PART NO.	AIRLINE PART NUMBER	NOMENCLATURE 1234567	EFF CODE	QTY PER ASSY
01-283	HL10VAZ8-6		.BOLT- (V60516) (SPEC BACB30MY8K6) (OPT B30MY8K6 (V97928)) (LIMITED) (ITEMS 345 AND 355 TOGETHER WITH ITEMS 275A, 280, 283, 287, 290 AND 295A OR ITEMS 345A AND 357 TOGETHER WITH ITEMS 275A, 280, 285, 290, 295A OPT TO ITEM 345B) (ITEMS 350 AND 360 TOGETHER WITH ITEMS 275A, 280, 283, 287, 290 AND 295A OR ITEMS 350A AND 363 TOGETHER WITH ITEMS 275A, 280, 285, 290, 295A OPT TO ITEM 350B)	A-D,F ,H-P	2

**57-26-32**

 ILLUSTRATED PARTS LIST  
 01.1 Page 1034  
 Nov 01/02


**BOEING**  
 COMPONENT  
 MAINTENANCE MANUAL

FIG. & ITEM	PART NO.	AIRLINE PART NUMBER	NOMENCLATURE 1234567	EFF CODE	QTY PER ASSY
R 01-283A	HL10VAZ8-6		.BOLT- (V60516) (SPEC BACB30MY8K6) (OPT B30MY8K6 (V97928)) (ITEMS 345F AND 355A TOGETHER WITH ITEMS 287A, (2) 283A, (2) 275B, (2) 290A, (2) 280A AND 295B OR ITEMS 345G AND 357A TOGETHER WITH ITEMS (2) 285A, (2) 275B, (2) 290A, (2) 280A AND 295B OPT TO ITEM 345H) (ITEMS 350F AND 360A TOGETHER WITH ITEMS 287A, (2) 283A, (2) 275B, (2) 290A, (2) 280A AND 295B OR ITEMS 350G AND 363A TOGETHER WITH ITEMS (2) 285A, (2) 275B, (2) 290A, (2) 280A AND 295B OPT TO ITEM 350H)	Q,R	2

57-26-32

 ILLUSTRATED PARTS LIST  
 01.1 Page 1035  
 Nov 01/02

FIG. & ITEM	PART NO.	AIRLINE PART NUMBER	NOMENCLATURE 1234567	EFF CODE	QTY PER ASSY
01-285	HL10VAZ8-4		.BOLT- (V60516) (SPEC BACB30MY8K4) (OPT B30MY8K4 (V97928)) (LIMITED) (ITEMS 345 AND 355 TOGETHER WITH ITEMS 275A, 280, 283, 287, 290 AND 295A OR ITEMS 345A AND 357 TOGETHER WITH ITEMS 275A, 280, 285, 290, 295A OPT TO ITEM 345B) (ITEMS 350 AND 360 TOGETHER WITH ITEMS 275A, 280, 283, 287, 290 AND 295A OR ITEMS 350A AND 363 TOGETHER WITH ITEMS 275A, 280, 285, 290, 295A OPT TO ITEM 350B)	A-D,F ,H-P	2

**57-26-32**

 ILLUSTRATED PARTS LIST  
 01.1 Page 1036  
 Nov 01/02


**BOEING**  
 COMPONENT  
 MAINTENANCE MANUAL

FIG. & ITEM	PART NO.	AIRLINE PART NUMBER	NOMENCLATURE	EFF CODE	QTY PER ASSY
R 01-285A	HL10VAZ8-4		1234567 .BOLT- (V60516) (SPEC BACB30MY8K4) (OPT B30MY8K4 (V97928)) (ITEMS 345F AND 355A TOGETHER WITH ITEMS 287A, (2) 283A, (2) 275B, (2) 290A, (2) 280A AND 295B OR ITEMS 345G AND 357A TOGETHER WITH ITEMS (2) 285A, (2) 275B, (2) 290A, (2) 280A AND 295B OPT TO ITEM 345H) (ITEMS 350F AND 360A TOGETHER WITH ITEMS 287A, (2) 283A, (2) 275B, (2) 290A, (2) 280A AND 295B OR ITEMS 350G AND 363A TOGETHER WITH ITEMS (2) 285A, (2) 275B, (2) 290A, (2) 280A AND 295B OPT TO ITEM 350H)	Q,R	2
287	113T1822-23		.FILLER- (LIMITED) (ITEMS 345 AND 355 TOGETHER WITH ITEMS 275A, 280, 283, 287, 290 AND 295A OR ITEMS 345A AND 357 TOGETHER WITH ITEMS 275A, 280, 285, 290, 295A OPT TO ITEM 345B) (ITEMS 350 AND 360 TOGETHER WITH ITEMS 275A, 280, 283, 287, 290 AND 295A OR ITEMS 350A AND 363 TOGETHER WITH ITEMS 275A, 280, 285, 290, 295A OPT TO ITEM 350B)	A-D,F ,H-P	1

57-26-32

ILLUSTRATED PARTS LIST

01.1

Page 1037

Nov 01/02

FIG. & ITEM	PART NO.	AIRLINE PART NUMBER	NOMENCLATURE	EFF CODE	QTY PER ASSY
R 01-287A	113T1822-23		1234567  .FILLER- (ITEMS 345F AND 355A TOGETHER WITH ITEMS 287A, (2) 283A, (2) 275B, (2) 290A, (2) 280A AND 295B OR ITEMS 345G AND 357A TOGETHER WITH ITEMS (2) 285A, (2) 275B, (2) 290A, (2) 280A AND 295B OPT TO ITEM 345H) (ITEMS 350F AND 360A TOGETHER WITH ITEMS 287A, (2) 283A, (2) 275B, (2) 290A, (2) 280A AND 295B OR ITEMS 350G AND 363A TOGETHER WITH ITEMS (2) 285A, (2) 275B, (2) 290A, (2) 280A AND 295B OPT TO ITEM 350H)	Q,R	1

**57-26-32**

 ILLUSTRATED PARTS LIST  
 01.1 Page 1038  
 Nov 01/02


**BOEING**  
 COMPONENT  
 MAINTENANCE MANUAL

FIG. & ITEM	PART NO.	AIRLINE PART NUMBER	NOMENCLATURE	EFF CODE	QTY PER ASSY
01-290	HL79-8		1234567 .COLLAR- (V56878) (SPEC BACC30M8) (OPT HL79-8 (V73197)) (OPT HL79-8 (V92215)) (OPT 66014-8 (V56878)) (OPT HL79-8 (V5M902)) (LIMITED) (ITEMS 345 AND 355 TOGETHER WITH ITEMS 275A, 280, 283, 287, 290 AND 295A OR ITEMS 345A AND 357 TOGETHER WITH ITEMS 275A, 280, 285, 290, 295A OPT TO ITEM 345B) (ITEMS 350 AND 360 TOGETHER WITH ITEMS 275A, 280, 283, 287, 290 AND 295A OR ITEMS 350A AND 363 TOGETHER WITH ITEMS 275A, 280, 285, 290, 295A OPT TO ITEM 350B)	A-D,F ,H-P	2

57-26-32

 ILLUSTRATED PARTS LIST  
 01.1 Page 1039  
 Nov 01/02

FIG. & ITEM	PART NO.	AIRLINE PART NUMBER	NOMENCLATURE	EFF CODE	QTY PER ASSY
R 01-290A	HL79-8		1234567 .COLLAR- (V56878) (SPEC BACC30M8) (OPT HL79-8 (V73197)) (OPT HL79-8 (V92215)) (OPT 66014-8 (V56878)) (OPT HL79-8 (V5M902)) (ITEMS 345F AND 355A TOGETHER WITH ITEMS 287A, (2) 283A, (2) 275B, (2) 290A, (2) 280A AND 295B OR ITEMS 345G AND 357A TOGETHER WITH ITEMS (2) 285A, (2) 275B, (2) 290A, (2) 280A AND 295B OPT TO ITEM 345H) (ITEMS 350F AND 360A TOGETHER WITH ITEMS 287A, (2) 283A, (2) 275B, (2) 290A, (2) 280A AND 295B OR ITEMS 350G AND 363A TOGETHER WITH ITEMS (2) 285A, (2) 275B, (2) 290A, (2) 280A AND 295B OPT TO ITEM 350H) DELETED	Q,R	2
295	BACS40R7C15F				

57-26-32

 ILLUSTRATED PARTS LIST  
 01.1 Page 1040  
 Nov 01/02




**BOEING**  
 COMPONENT  
 MAINTENANCE MANUAL

FIG. & ITEM	PART NO.	AIRLINE PART NUMBER	NOMENCLATURE 1234567	EFF CODE	QTY PER ASSY
01-295A	BACS40R07C15F		.SHIM- (LIMITED) (ITEMS 345 AND 355 TOGETHER WITH ITEMS 275A, 280, 283, 287, 290 AND 295A OR ITEMS 345A AND 357 TOGETHER WITH ITEMS 275A, 280, 285, 290, 295A OPT TO ITEM 345B) (ITEMS 350 AND 360 TOGETHER WITH ITEMS 275A, 280, 283, 287, 290 AND 295A OR ITEMS 350A AND 363 TOGETHER WITH ITEMS 275A, 280, 285, 290, 295 OPT TO ITEM 350B)	A-D,F ,H-P	1
R -295B	BACS40R07C15F		.SHIM- (ITEMS 345F AND 355A TOGETHER WITH ITEMS 287A, (2) 283A, (2) 275B, (2) 290A, (2) 280A AND 295B OR ITEMS 345G AND 357A TOGETHER WITH ITEMS (2) 285A, (2) 275B, (2) 290A, (2) 280A AND 295B OPT TO ITEM 345H) (ITEMS 350F AND 360A TOGETHER WITH ITEMS 287A, (2) 283A, (2) 275B, (2) 290A, (2) 280A AND 295B OR ITEMS 350G AND 363A TOGETHER WITH ITEMS (2) 285A, (2) 275B, (2) 290A, (2) 280A AND 295B OPT TO ITEM 350H)	Q,R	1
300	BACR15BA6AD		.RIVET- (SIZE DETERMINE ON INST)	A-D,F ,H-T	39
305	NAS1399MW6-4		.RIVET	A-D,F ,H-T	2
310	NAS1399MW6-5		.RIVET	A-D,F ,H-T	2

57-26-32

 ILLUSTRATED PARTS LIST  
 01.1 Page 1041  
 Nov 01/02

FIG. & ITEM	PART NO.	AIRLINE PART NUMBER	NOMENCLATURE 1234567	EFF CODE	QTY PER ASSY
01-					
315	113T1862-1		DELETED		
315A	113T1862-5		DELETED		
315B	113T1862-7		DELETED		
315C	113T1862-11		.BOND ASSY	A,C	1
-315D	113T1862-13		.BOND ASSY	F,J,L ,N,Q, S	1
-320	113T1862-2		DELETED		
-320A	113T1862-6		DELETED		
-320B	113T1862-8		DELETED		
-320C	113T1862-12		.BOND ASSY	B,D	1
-320D	113T1862-14		.BOND ASSY	H,K,M ,P,R, T	1
325	113T1862-3		DELETED		
325A	113T1862-9		DELETED		
-330	113T1862-4		DELETED		
-330A	113T1862-10		DELETED		
333	BACR15FT8AD5		.RIVET	A-D,F ,H-T	2
335	113T1888-1		DELETED		
335A	113T1888-3		.FRAME	A,C,F ,J,L, N,Q,S	1
-340	113T1888-2		DELETED		
-340A	113T1888-4		.FRAME	B,D,H ,K,M, P,R,T	1
345	113T1886-1		.FRAME- (LIMITED) (ITEMS 345 AND 355 TOGETHER WITH ITEMS 275A, 280, 283, 287, 290 AND 295A OR ITEMS 345A AND 357 TOGETHER WITH ITEMS 275A, 280, 285, 290, 295A OPT TO ITEM 345B)	A,C,F ,H-P	1

# 57-26-32

ILLUSTRATED PARTS LIST

01.1

Page 1042

Nov 01/02


**BOEING**  
 COMPONENT  
 MAINTENANCE MANUAL

FIG. & ITEM	PART NO.	AIRLINE PART NUMBER	NOMENCLATURE 1234567	EFF CODE	QTY PER ASSY
01-345A	113T1886-5		.FRAME- (LIMITED) (ITEMS 345 AND 355 TOGETHER WITH ITEMS 275A, 280, 283, 287, 290 AND 295A OR ITEMS 345A AND 357 TOGETHER WITH ITEMS 275A, 280, 285, 290, 295A OPT TO ITEM 345B)	A,C,F ,H-P	1
345B	113T1824-1		.FRAME- (LIMITED) (ITEMS 345 AND 355 TOGETHER WITH ITEMS 275A, 280, 283, 287, 290 AND 295A OR ITEMS 345A AND 357 TOGETHER WITH ITEMS 275A, 280, 285, 290, 295A OPT TO ITEM 345B)	A,C,F ,H-P	1
345C	113T1886-1		DELETED		
345D	113T1886-5		DELETED		
345E	113T1824-1		DELETED		
R -345F	113T1886-1		.FRAME- (ITEMS 345F AND 355A TOGETHER WITH ITEMS 287A, (2) 283A, (2) 275B, (2) 290A, (2) 280A AND 295B OR ITEMS 345G AND 357A TOGETHER WITH ITEMS (2) 285A, (2) 275B, (2) 290A, (2) 280A AND 295B OPT TO ITEM 345H)	Q	1
R -345G	113T1886-5		.FRAME- (ITEMS 345F AND 355A TOGETHER WITH ITEMS 287A, (2) 283A, (2) 275B, (2) 290A, (2) 280A AND 295B OR ITEMS 345G AND 357A TOGETHER WITH ITEMS (2) 285A, (2) 275B, (2) 290A, (2) 280A AND 295B OPT TO ITEM 345H)	Q	1

57-26-32

ILLUSTRATED PARTS LIST

01.1

Page 1043

Nov 01/02

FIG. & ITEM	PART NO.	AIRLINE PART NUMBER	NOMENCLATURE 1234567	EFF CODE	QTY PER ASSY
R 01- -345H	113T1824-5		.FRAME- (ITEMS 345F AND 355A TOGETHER WITH ITEMS 287A, (2) 283A, (2) 275B, (2) 290A, (2) 280A AND 295B OR ITEMS 345G AND 357A TOGETHER WITH ITEMS (2) 285A, (2) 275B, (2) 290A, (2) 280A AND 295B OPT TO ITEM 345H)	Q	1
R -345J	113T1824-5		.FRAME- (OPT ITEMS 370, 425)	S	1
-350	113T1886-2		.FRAME- (LIMITED) (ITEMS 350 AND 360 TOGETHER WITH ITEMS 275A, 280, 283, 287, 290 AND 295A OR ITEMS 350A AND 363 TOGETHER WITH ITEMS 275A, 280, 285, 290, 295A OPT TO ITEM 350B)	B,D,F ,H-P	1
-350A	113T1886-6		.FRAME- (LIMITED) (ITEMS 350 AND 360 TOGETHER WITH ITEMS 275A, 280, 283, 287, 290 AND 295A OR ITEMS 350A AND 363 TOGETHER WITH ITEMS 275A, 280, 285, 290, 295A OPT TO ITEM 350B)	B,D,F ,H-P	1
-350B	113T1824-2		.FRAME- (LIMITED) (ITEMS 350 AND 360 TOGETHER WITH ITEMS 275A, 280, 283, 287, 290 AND 295A OR ITEMS 350A AND 363 TOGETHER WITH ITEMS 275A, 280, 285, 290, 295A OPT TO ITEM 350B)	B,D,H ,K,M, P	1
-350C	113T1886-2		DELETED		
-350D	113T1886-6		DELETED		

57-26-32

 ILLUSTRATED PARTS LIST  
 01.1 Page 1044  
 Nov 01/02


**BOEING**  
 COMPONENT  
 MAINTENANCE MANUAL

FIG. & ITEM	PART NO.	AIRLINE PART NUMBER	NOMENCLATURE 1234567	EFF CODE	QTY PER ASSY
R 01- -350E -350F	113T1824-2 113T1886-2		DELETED .FRAME- (ITEMS 350F AND 360A TOGETHER WITH ITEMS 287A, (2) 283A, (2) 275B, (2) 290A, (2) 280A AND 295B OR ITEMS 350G AND 363A TOGETHER WITH ITEMS (2) 285A, (2) 275B, (2) 290A, (2) 280A AND 295B OPT TO ITEM 350H)	R	1
R -350G	113T1886-6		.FRAME- (ITEMS 350F AND 360A TOGETHER WITH ITEMS 287A, (2) 283A, (2) 275B, (2) 290A, (2) 280A AND 295B OR ITEMS 350G AND 363A TOGETHER WITH ITEMS (2) 285A, (2) 275B, (2) 290A, (2) 280A AND 295B OPT TO ITEM 350H)	R	1
R -350H	113T1824-6		.FRAME- (ITEMS 350F AND 360A TOGETHER WITH ITEMS 287A, (2) 283A, (2) 275B, (2) 290A, (2) 280A AND 295B OR ITEMS 350G AND 363A TOGETHER WITH ITEMS (2) 285A, (2) 275B, (2) 290A, (2) 280A AND 295B OPT TO ITEM 350H)	R	1
R -350J	113T1824-6		.FRAME- (OPT ITEMS 375, 430)	T	1

57-26-32

 ILLUSTRATED PARTS LIST  
 01.1 Page 1045  
 Nov 01/02

FIG. & ITEM	PART NO.	AIRLINE PART NUMBER	NOMENCLATURE	EFF CODE	QTY PER ASSY
			1234567		
01-355	113T1886-3		.FRAME- (LIMITED) (ITEMS 345 AND 355 TOGETHER WITH ITEMS 275A, 280, 283, 287, 290 AND 295A OR ITEMS 345A AND 357 TOGETHER WITH ITEMS 275A, 280, 285, 290, 295A OPT TO ITEM 345B)	A,C,F ,J,L, N	1
R -355A	113T1886-3		.FRAME- (ITEMS 345F AND 355A TOGETHER WITH ITEMS 287A, (2) 283A, (2) 275B, (2) 290A, (2) 280A AND 295B OR ITEMS 345G AND 357A TOGETHER WITH ITEMS (2) 285A, (2) 275B, (2) 290A, (2) 280A AND 295B OPT TO ITEM 345H)	Q	1
-357	113T1886-7		.FRAME- (LIMITED) (ITEMS 345 AND 355 TOGETHER WITH ITEMS 275A, 280, 283, 287, 290 AND 295A OR ITEMS 345A AND 357 TOGETHER WITH ITEMS 275A, 280, 285, 290, 295A OPT TO ITEM 345B)	A,C,F ,J,L, N	1
R -357A	113T1886-7		.FRAME- (ITEMS 345F AND 355A TOGETHER WITH ITEMS 287A, (2) 283A, (2) 275B, (2) 290A, (2) 280A AND 295B OR ITEMS 345G AND 357A TOGETHER WITH ITEMS (2) 285A, (2) 275B, (2) 290A, (2) 280A AND 295B OPT TO ITEM 345H)	Q	1

57-26-32

ILLUSTRATED PARTS LIST

01.1

Page 1046

Nov 01/02


**BOEING**  
 COMPONENT  
 MAINTENANCE MANUAL

FIG. & ITEM	PART NO.	AIRLINE PART NUMBER	NOMENCLATURE 1234567	EFF CODE	QTY PER ASSY
01- -360	113T1886-4		.FRAME- (LIMITED) (ITEMS 350 AND 360 TOGETHER WITH ITEMS 275A, 280, 283, 287, 290 AND 295A OR ITEMS 350A AND 363 TOGETHER WITH ITEMS 275A, 280, 285, 290, 295A OPT TO ITEM 350B)	B,D,H ,K,M, P	1
R -360A	113T1886-4		.FRAME- (ITEMS 350F AND 360A TOGETHER WITH ITEMS 287A, (2) 283A, (2) 275B, (2) 290A, (2) 280A AND 295B OR ITEMS 350G AND 363A TOGETHER WITH ITEMS (2) 285A, (2) 275B, (2) 290A, (2) 280A AND 295B OPT TO ITEM 350H)	R	1
-363	113T1886-8		.FRAME- (LIMITED) (ITEMS 350 AND 360 TOGETHER WITH ITEMS 275A, 280, 283, 287, 290 AND 295A OR ITEMS 350A AND 363 TOGETHER WITH ITEMS 275A, 280, 285, 290, 295A OPT TO ITEM 350B)	B,D,H ,K,M, P	1
R -363A	113T1886-8		.FRAME- (ITEMS 350F AND 360A TOGETHER WITH ITEMS 287A, (2) 283A, (2) 275B, (2) 290A, (2) 280A AND 295B OR ITEMS 350G AND 363A TOGETHER WITH ITEMS (2) 285A, (2) 275B, (2) 290A, (2) 280A AND 295B OPT TO ITEM 350H)	R	1
R 370	113T1822-41		.KIT ASSY-SUB (OPT ITEMS 345J, 425)	S	1

57-26-32

 ILLUSTRATED PARTS LIST  
 01.1 Page 1047  
 Nov 01/02

FIG. & ITEM	PART NO.	AIRLINE PART NUMBER	NOMENCLATURE 1234567	EFF CODE	QTY PER ASSY
R 01-375	113T1822-42		.KIT ASSY-SUB (OPT ITEMS 350J, 430)	T	1
R 380	HL10VAZ8-4		..BOLT- (V60516) (SPEC BACB30MY8K4) (OPT B30MY8K4 (V97928))	S,T	2
R 385	HL11VAZ6-3		..BOLT- (V56878) (SPEC BACB30NW6K3) (OPT B30NW6K3 (V97928)) (OPT HL11VAZ6-3 (V73197)) (OPT HL11VAZ6-3 (V92215)) (OPT HL11VAZ6-3 (V97928)) (OPT L803-6K3 (V06725)) (OPT HL11VAZ6-3 (V0PTK6)) (OPT HL11VAZ6-3 (V60516))	S,T	2
R 390	HL79-8		..COLLAR- (V56878) (SPEC BACC30M8) (OPT HL79-8 (V73197)) (OPT HL79-8 (V92215)) (OPT 66014-8 (V56878)) (OPT HL79-8 (V5M902))	S,T	2

**57-26-32**

 ILLUSTRATED PARTS LIST  
 01.1 Page 1048  
 Nov 01/02



**BOEING**  
 COMPONENT  
 MAINTENANCE MANUAL

FIG. & ITEM	PART NO.	AIRLINE PART NUMBER	NOMENCLATURE 1234567	EFF CODE	QTY PER ASSY
R 01-395	HL79-6		..COLLAR- (V56878) (SPEC BACC30M6) (OPT HL79-6 (V73197)) (OPT HL79-6 (V92215)) (OPT 66014-6 (V56878)) (OPT HL79-6 (V5M902))	S,T	2
R 400	BACS40R07C15F		..SHIM	S,T	1
R 405	113T1886-5		..FRAME	S	1
R -410	113T1886-6		..FRAME	T	1
R 415	113T1886-7		..FRAME	S	1
R -420	113T1886-8		..FRAME	T	1
R 425	113T1822-39		.KIT ASSY-SUB (OPT ITEMS 345J, 370)	S	1
R -430	113T1822-40		.KIT ASSY-SUB (OPT ITEMS 350J, 375)	T	1
R 435	HL10VAZ8-6		..BOLT- (V60516) (SPEC BACB30MY8K6) (OPT B30MY8K6 (V97928))	S,T	2
R 440	HL11VAZ6-3		..BOLT- (V56878) (SPEC BACB30NW6K3) (OPT B30NW6K3 (V97928)) (OPT HL11VAZ6-3 (V73197)) (OPT HL11VAZ6-3 (V92215)) (OPT HL11VAZ6-3 (V97928)) (OPT L803-6K3 (V06725)) (OPT HL11VAZ6-3 (V0PTK6)) (OPT HL11VAZ6-3 (V60516))	S,T	2

**57-26-32**

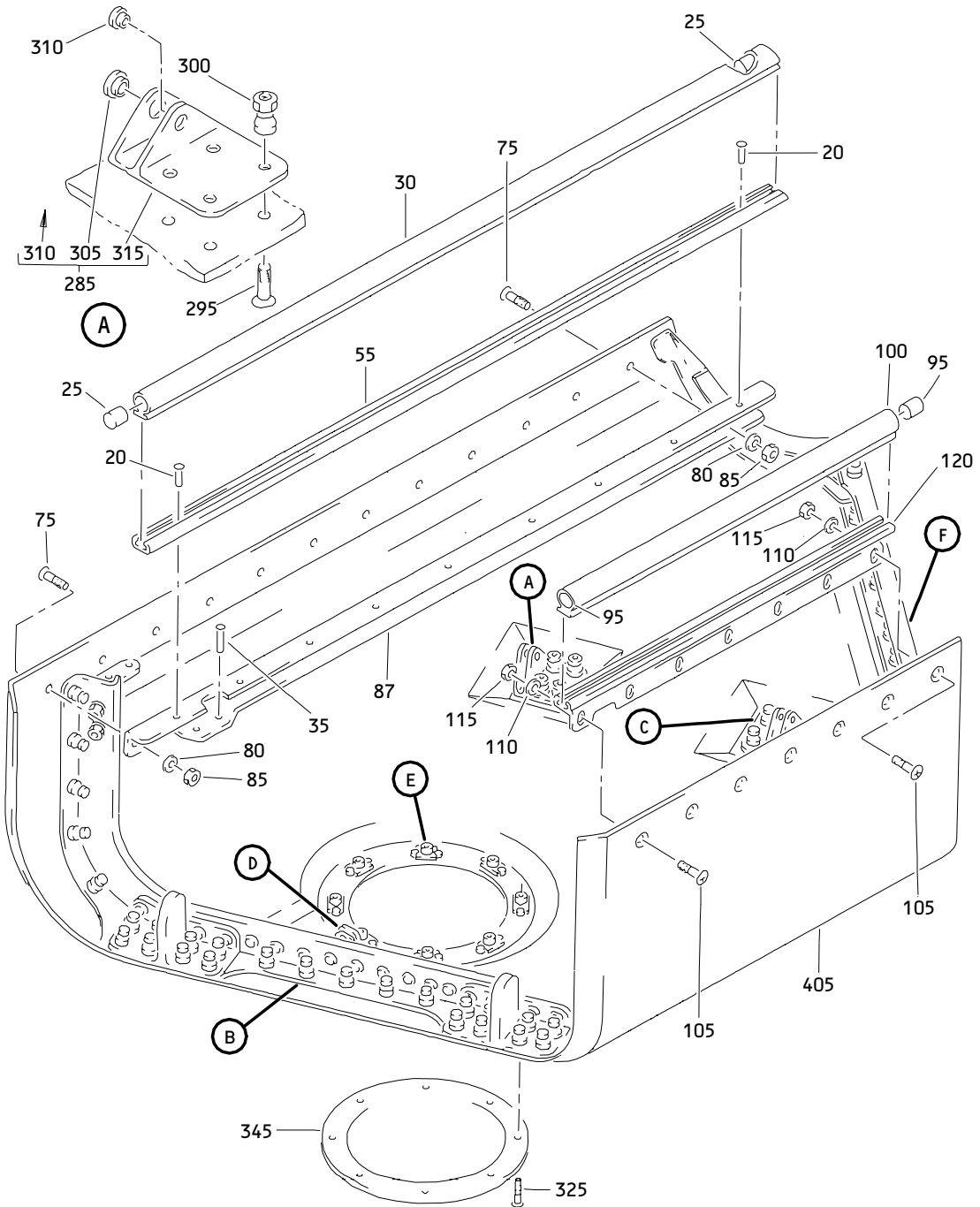
ILLUSTRATED PARTS LIST  
 01.1 Page 1049  
 Nov 01/02

FIG. & ITEM	PART NO.	AIRLINE PART NUMBER	NOMENCLATURE 1234567	EFF CODE	QTY PER ASSY
R 01-445	HL79-8		..COLLAR- (V56878) (SPEC BACC30M8) (OPT HL79-8 (V73197)) (OPT HL79-8 (V92215)) (OPT 66014-8 (V56878)) (OPT HL79-8 (V5M902))	S,T	2
R 450	HL79-6		..COLLAR- (V56878) (SPEC BACC30M6) (OPT HL79-6 (V73197)) (OPT HL79-6 (V92215)) (OPT 66014-6 (V56878)) (OPT HL79-6 (V5M902))	S,T	2
R 455	113T1822-23		..FILLER	S,T	1
R 460	BACS40R07C15F		..SHIM	S,T	1
R 465	113T1886-1		..FRAME	S	1
R -470	113T1886-2		..FRAME	T	1
R 475	113T1886-3		..FRAME	S	1
R -480	113T1886-4		..FRAME	T	1
R			BOEING LETTER HISTORY		

- Item Not Illustrated

# 57-26-32

ILLUSTRATED PARTS LIST  
 01.1 Page 1050  
 Nov 01/02

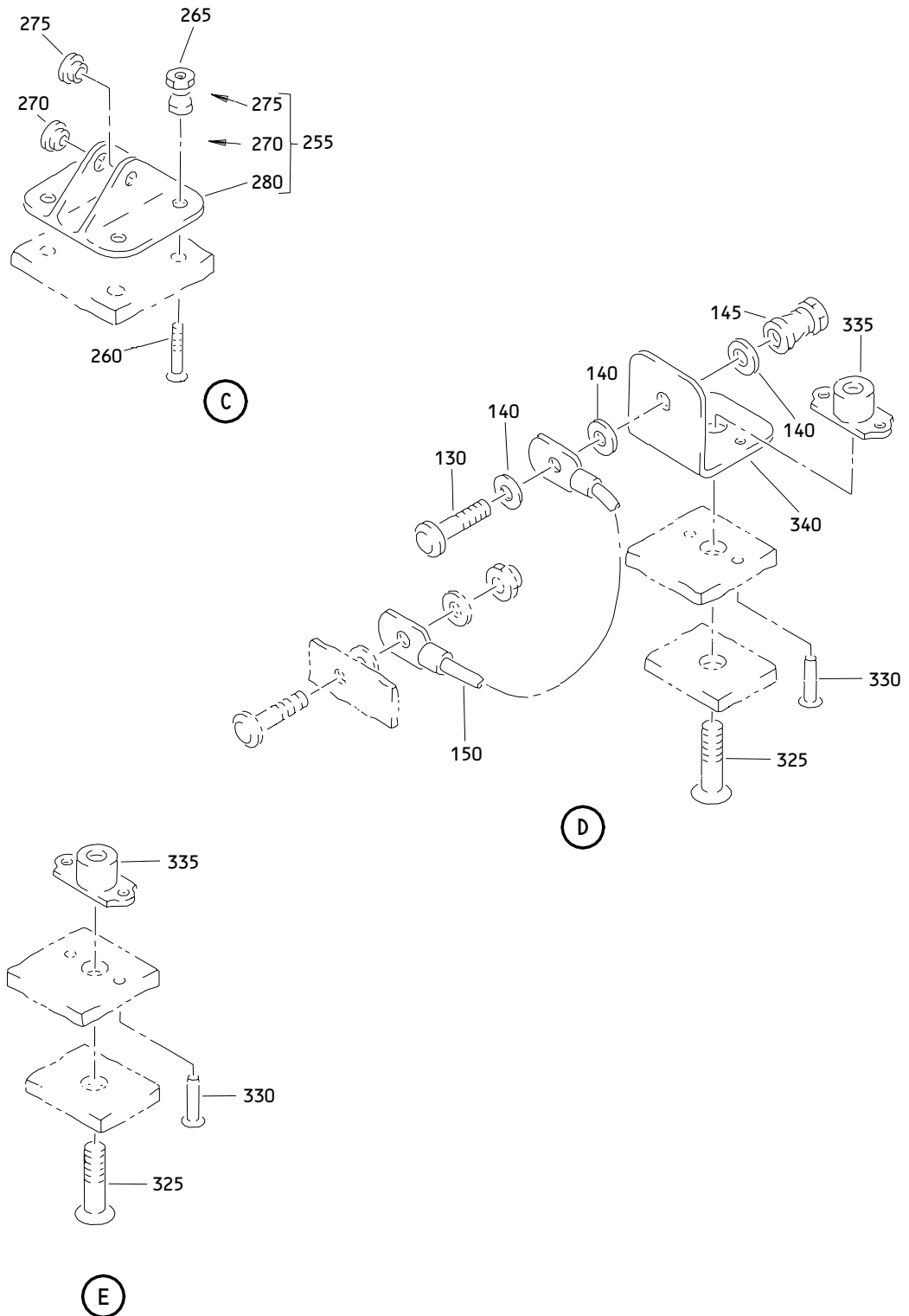


Outboard Trailing Edge Flap No. 2 Mid Fairing Assembly  
Figure 2 (Sheet 1)

**57-26-32**

ILLUSTRATED PARTS LIST  
01.1 Page 1051  
Nov 01/02

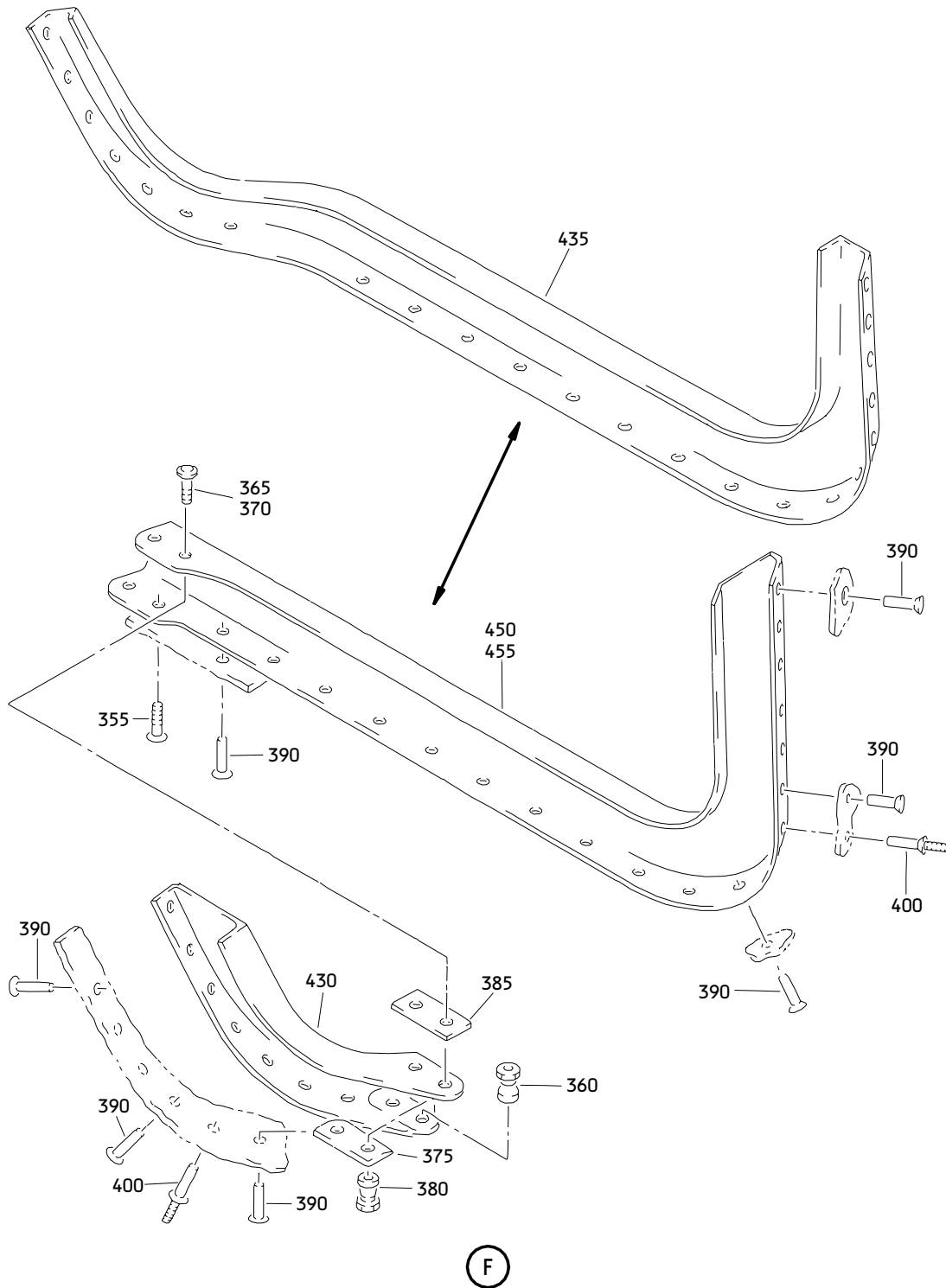




Outboard Trailing Edge Flap No. 2 Mid Fairing Assembly  
 Figure 2 (Sheet 3)

**57-26-32**

ILLUSTRATED PARTS LIST  
 01.1 Page 1053  
 Nov 01/02



Outboard Trailing Edge Flap No. 2 Mid Fairing Assembly  
 Figure 2 (Sheet 4)

**57-26-32**

ILLUSTRATED PARTS LIST  
 01.1 Page 1054  
 Nov 01/02


**BOEING**  
 COMPONENT  
 MAINTENANCE MANUAL

FIG. & ITEM	PART NO.	AIRLINE PART NUMBER	NOMENCLATURE 1234567	EFF CODE	QTY PER ASSY
02- -1	113T1822-25SP		FAIRING ASSY-OUTBD TE FLAP NO. 2 MID (LH)	E	RF
-1A	113T1822-27		DELETED		
-5	113T1822-26SP		FAIRING ASSY-OUTBD TE FLAP NO. 2 MID (RH)	G	RF
-5A	113T1822-28		DELETED		
-10	113T1822-5001		.FAIRING ASSY- (REPLD BY ITEM 10A)	E	1
-10A	113T1822-5003		.FAIRING ASSY- (REPLS ITEM 10)	E	1
-15	113T1822-5002		.FAIRING ASSY- (REPLD BY ITEM 15A)	G	1
-15A	113T1822-5004		.FAIRING ASSY- (REPLS ITEM 15)	G	1
20	BACR15BA5AD		..RIVET- (SIZE DETERMINE ON INST)	E,G	9
R 25	113T1822-24		..PLUG- (MFD FROM SH RUBBER BMS 1-23 .875 DIA X 2.7)	E,G	2
30	113T1822-7		..SEAL- (MFD FROM EXTR RUBBER 10-60754-718 36.6 IN.)	E,G	1
35	BACR15BB6AD		..RIVET- (SIZE DETERMINE ON INST)	E,G	2
40	BACB30NM3K3		..BOLT	E,G	2
45	AN960XC10L		..WASHER	E,G	2
50	H10-3BAC		..NUT- (V15653) (SPEC BACN10JC3) (OPT NS202101-02 (V80539)) (OPT RMLH9075-3W (V72962)) (OPT T6S1032J (V71087)) (OPT VN303A02 (V92215)) (OPT 96-02 (V80539)) (OPT BRH10A3 (V52828))	E,G	2

57-26-32

ILLUSTRATED PARTS LIST

01.1

Page 1055

Nov 01/02

FIG. & ITEM	PART NO.	AIRLINE PART NUMBER	NOMENCLATURE 1234567	EFF CODE	QTY PER ASSY
02-					
55	113T1822-9		..RETAINER	E	1
-60	113T1822-14		..RETAINER	G	1
65	113T1844-1		..CLIP	E	1
-70	113T1844-2		..CLIP	G	1
75	BACB30NN3K3		..BOLT	E,G	12
80	AN960XC10L		..WASHER	E,G	12
85	H10-3BAC		..NUT- (V15653) (SPEC BACN10JC3) (OPT NS202101-02 (V80539)) (OPT RMLH9075-3W (V72962)) (OPT T6S1032J (V71087)) (OPT VN303A02 (V92215)) (OPT 96-02 (V80539)) (OPT BRH10A3 (V52828))	E,G	12
87	113T1822-3		..BEAM	E	1
-90	113T1822-4		..BEAM	G	1
R 95	113T1822-24		..PLUG- (MFD FROM SH RUBBER BMS 1-23 .875 DIA X 2.7)	E,G	2
100	113T1822-8		..SEAL- (MFD FROM EXTR RUBBER 10-60754-718 22.00 IN.)	E,G	1
105	BACB30NN3K3		..BOLT	E,G	7
110	AN960XC10L		..WASHER	E,G	7

**57-26-32**

ILLUSTRATED PARTS LIST

01.1

Page 1056

Nov 01/02




**BOEING**  
 COMPONENT  
 MAINTENANCE MANUAL

FIG. & ITEM	PART NO.	AIRLINE PART NUMBER	NOMENCLATURE 1234567	EFF CODE	QTY PER ASSY
02-115	H10-3BAC		..NUT- (V15653) (SPEC BACN10JC3) (OPT NS202101-02 (V80539)) (OPT RMLH9075-3W (V72962)) (OPT T6S1032J (V71087)) (OPT VN303A02 (V92215)) (OPT 96-02 (V80539)) (OPT BRH10A3 (V52828))	E,G	7
120	113T1822-5		..RETAINER	E	1
-125	113T1822-6		..RETAINER	G	1
130	HL448UC6-4		..BOLT- (V56878) (SPEC BACB30MB6A4) (OPT HL448UC6-4 (V73197)) (OPT HL448UC6-4 (V92215)) (OPT HL448UC6-4 (V97928)) (OPT 69308-6A4 (V56878)) (OPT HL448UC6-4 (V80539)) (OPT HL448UC6-4 (V08524)) (OPT HL448UC6-4 (V9N513)) (OPT WC4486-4 (V60516))	E,G	1

57-26-32

ILLUSTRATED PARTS LIST

01.1

Page 1057

Nov 01/02

FIG. & ITEM	PART NO.	AIRLINE PART NUMBER	NOMENCLATURE 1234567	EFF CODE	QTY PER ASSY
02-135	HL448UC6-5		.BOLT- (V56878) (SPEC BACB30MB6A5) (OPT HL448UC6-5 (V73197)) (OPT HL448UC6-5 (V92215)) (OPT HL448UC6-5 (V97928)) (OPT 69308-6A5 (V56878)) (OPT HL448UC6-5 (V80539)) (OPT HL448UC6-5 (V08524)) (OPT HL448UC6-5 (V9N513)) (OPT WC4486-5 (V60516))	E,G	1
140	AN960-10L		..WASHER	E,G	6
145	HL1187-6		..COLLAR- (V73197) (SPEC BACC30X6) (OPT HL87-6 (V73197)) (OPT HL87-6 (V92215)) (OPT HL1187-6 (V56878)) (OPT HL1187-6 (V92215)) (OPT HL87-6 (V56878)) (OPT HL1187-6 (V5M902))	E,G	2

# 57-26-32

ILLUSTRATED PARTS LIST

01.1

Page 1058

Nov 01/02

**BOEING**  
 COMPONENT  
 MAINTENANCE MANUAL

FIG. & ITEM	PART NO.	AIRLINE PART NUMBER	NOMENCLATURE 1234567	EFF CODE	QTY PER ASSY
02-					
150	BACJ40A20-4		.. JUMPER	E,G	1
155	113T1833-41		.. FITTING ASSY-HINGE	E	1
-160	113T1833-42		.. FITTING ASSY-HINGE	G	1
165	113T1833-29		.. FITTING ASSY-HINGE	E	1
-170	113T1833-30		.. FITTING ASSY-HINGE	G	1
175	HL13VAZ8-6		.. BOLT- (V56878) (SPEC BACB30NY8K6) (OPT HL13VAZ8-6 (V73197)) (OPT HL13VAZ8-6 (V92215)) (OPT HL13VAZ8-6 (V97928)) (OPT L801-8K6 (V06725)) (OPT HL13VAZ8-6 (V08524)) (OPT HL13V6 (V06725)) (OPT HL13VAZ8-6 (V17446))	E,G	16
R 180	HL79-8		.. COLLAR- (V56878) (SPEC BACC30M8) (OPT HL79-8 (V73197)) (OPT HL79-8 (V92215)) (OPT 66014-8 (V56878)) (OPT HL79-8 (V5M902))	E,G	16
180A	HL1187-8		DELETED		

**57-26-32**

ILLUSTRATED PARTS LIST  
 01.1 Page 1059  
 Nov 01/02

FIG. & ITEM	PART NO.	AIRLINE PART NUMBER	NOMENCLATURE 1234567	EFF CODE	QTY PER ASSY
02-185	HL10VAZ6-5		..BOLT- (V60516) (SPEC BACB30MY6K5) (OPT B30MY6K5 (V97928))	E,G	8
190	HL79-6		..COLLAR- (V56878) (SPEC BACC30M6) (OPT HL79-6 (V73197)) (OPT HL79-6 (V92215)) (OPT 66014-6 (V56878)) (OPT HL79-6 (V5M902)) -----*	E,G	8
195	MS15001-1		...FITTING	E,G	1
200	ABWEN05VC		...BEARING- (V50294) (SPEC BACB10EN05GC) (OPT AG5V29C (V15860))	E,G	1
205	113T1833-43		...FITTING- (USED ON ITEM 155)	E	1
-210	113T1833-44		...FITTING- (USED ON ITEM 160)	G	1
215	113T1833-31		...FITTING- (USED ON ITEM 165)	E	1
-220	113T1833-32		...FITTING- (USED ON ITEM 170)	G	1
225	BACS40R22B44F		..SHIM	E,G	AR
230	BACS40R08B18F		..SHIM	E,G	AR
235	BACR15BA6AD		..RIVET- (SIZE DETERMINE ON INST)	E,G	19
240	BACR15BB6AD		..RIVET- (SIZE DETERMINE ON INST)	E,G	8
245	113T1822-11		..ANGLE	E	1

# 57-26-32

 ILLUSTRATED PARTS LIST  
 01.1 Page 1060  
 Nov 01/02


**BOEING**  
 COMPONENT  
 MAINTENANCE MANUAL

FIG. & ITEM	PART NO.	AIRLINE PART NUMBER	NOMENCLATURE 1234567	EFF CODE	QTY PER ASSY
02-					
-250	113T1822-12		..ANGLE	G	1
255	113T1830-1		..FITTING ASSY-SPRT ATTACHING PARTS	E,G	1
260	HL13VAZ8-4		..BOLT- (V56878) (SPEC BACB30NY8K4) (OPT HL13VAZ8-4 (V73197)) (OPT HL13VAZ8-4 (V92215)) (OPT HL13VAZ8-4 (V97928)) (OPT L801-8K4 (V06725)) (OPT HL13VAZ8-4 (V08524)) (OPT HL13V4 (V06725)) (OPT HL13VAZ8-4 (V17446))	E,G	4
R 265	HL79-8		..COLLAR- (V56878) (SPEC BACC30M8) (OPT HL79-8 (V73197)) (OPT HL79-8 (V92215)) (OPT 66014-8 (V56878)) (OPT HL79-8 (V5M902))	E,G	4
265A	HL1187-8		DELETED		
270	BACB28AM06B008A		...BUSHING	E,G	1
275	BACB28AP04P008		...BUSHING	E,G	1
280	113T1830-2		...FITTING-LINK	E,G	1
285	113T1830-7		..FITTING ASSY	E,G	1
-290	113T1830-8		..FITTING ASSY	G	1

57-26-32

ILLUSTRATED PARTS LIST

01.1

Page 1061

Nov 01/02

FIG. & ITEM	PART NO.	AIRLINE PART NUMBER	NOMENCLATURE 1234567	EFF CODE	QTY PER ASSY
02-295	HL13VAZ8-4		..BOLT- (V56878) (SPEC BACB30NY8K4) (OPT HL13VAZ8-4 (V73197)) (OPT HL13VAZ8-4 (V92215)) (OPT HL13VAZ8-4 (V97928)) (OPT L801-8K4 (V06725)) (OPT HL13VAZ8-4 (V08524)) (OPT HL13V4 (V06725)) (OPT HL13VAZ8-4 (V17446))	E,G	4
R 300	HL79-8		..COLLAR- (V56878) (SPEC BACC30M8) (OPT HL79-8 (V73197)) (OPT HL79-8 (V92215)) (OPT 66014-8 (V56878)) (OPT HL79-8 (V5M902))	E,G	4
300A	HL1187-8		DELETED		
305	BACB28AM06B008A		...BUSHING	E,G	1
310	BACB28AP04P008		...BUSHING	E,G	1
315	113T1830-9		...FITTING-LINK	E	1
-320	113T1830-10		...FITTING-LINK	G	1
325	BACB30LR3-3		..BOLT	E,G	8
330	BACR15BA3AD		..RIVET- (SIZE DETERMINE ON INST)	E,G	16
335	NS103191-02-2		..NUTPLATE- (V80539) (SPEC BACN10KE3B2) (OPT F51750-3-2 (V15653)) (OPT RMF9213-2-3 (V72962)) (OPT BRFR220A3-2 (V52825))	E,G	8

57-26-32

ILLUSTRATED PARTS LIST

01.1

Page 1062

Nov 01/02


**BOEING**  
 COMPONENT  
 MAINTENANCE MANUAL

FIG. & ITEM	PART NO.	AIRLINE PART NUMBER	NOMENCLATURE 1234567	EFF CODE	QTY PER ASSY
02-					
340	113T1803-1		..CLIP	E,G	1
345	113T1813-1		..DOOR	E	1
-350	113T1813-2		..DOOR	G	1
355	HL11VAZ6-3		..BOLT-	E,G	2
			(V56878)		
			(SPEC BACB30NW6K3)		
			(OPT B30NW6K3		
			(V97928))		
			(OPT HL11VAZ6-3		
			(V73197))		
			(OPT HL11VAZ6-3		
			(V92215))		
			(OPT HL11VAZ6-3		
			(V97928))		
			(OPT L803-6K3		
			(V06725))		
			(OPT HL11VAZ6-3		
			(V0PTK6))		
			(OPT HL11VAZ6-3		
			(V60516))		
			(ITEMS 430 AND 450		
			TOGETHER WITH ITEMS 355,		
			360, 365, 375, 380 AND		
			385 OR ITEMS 430A AND		
			455 TOGETHER WITH ITEMS		
			355, 360, 370, 380, 385		
			OPT TO ITEM 435)		
			(ITEMS 440 AND 460		
			TOGETHER WITH ITEMS 355,		
			360, 365, 375, 380 AND		
			385 OR ITEMS 440A AND		
			465 TOGETHER WITH ITEMS		
			355, 360, 370, 380, 385		
			OPT TO ITEM 445)		

57-26-32

ILLUSTRATED PARTS LIST

01.1

Page 1063

Nov 01/02

FIG. & ITEM	PART NO.	AIRLINE PART NUMBER	NOMENCLATURE	EFF CODE	QTY PER ASSY
02-360	HL79-6		1234567 ..COLLAR- (V56878) (SPEC BACC30M6) (OPT HL79-6 (V73197)) (OPT HL79-6 (V92215)) (OPT 66014-6 (V56878)) (OPT HL79-6 (V5M902)) (ITEMS 430 AND 450 TOGETHER WITH ITEMS 355, 360, 365, 375, 380 AND 385 OR ITEMS 430A AND 455 TOGETHER WITH ITEMS 355, 360, 370, 380, 385 OPT TO ITEM 435) (ITEMS 440 AND 460 TOGETHER WITH ITEMS 355, 360, 365, 375, 380 AND 385 OR ITEMS 440A AND 465 TOGETHER WITH ITEMS 355, 360, 370, 380, 385 OPT TO ITEM 445)	E,G	2
365	HL10VAZ8-6		..BOLT- (V60516) (SPEC BACB30MY8K6) (OPT B30MY8K6 (V97928)) (ITEMS 430 AND 450 TOGETHER WITH ITEMS 355, 360, 365, 375, 380 AND 385 OR ITEMS 430A AND 455 TOGETHER WITH ITEMS 355, 360, 370, 380, 385 OPT TO ITEM 435) (ITEMS 440 AND 460 TOGETHER WITH ITEMS 355, 360, 365, 375, 380 AND 385 OR ITEMS 440A AND 465 TOGETHER WITH ITEMS 355, 360, 370, 380, 385 OPT TO ITEM 445)	E,G	2

57-26-32

ILLUSTRATED PARTS LIST

01.1

Page 1064

Nov 01/02




**BOEING**  
 COMPONENT  
 MAINTENANCE MANUAL

FIG. & ITEM	PART NO.	AIRLINE PART NUMBER	NOMENCLATURE 1234567	EFF CODE	QTY PER ASSY
02-370	HL10VAZ8-4		..BOLT- (V60516) (SPEC BACB30MY8K4) (OPT B30MY8K4 (V97928)) (ITEMS 430 AND 450 TOGETHER WITH ITEMS 355, 360, 365, 375, 380 AND 385 OR ITEMS 430A AND 455 TOGETHER WITH ITEMS 355, 360, 370, 380, 385 OPT TO ITEM 435) (ITEMS 440 AND 460 TOGETHER WITH ITEMS 355, 360, 365, 375, 380 AND 385 OR ITEMS 440A AND 465 TOGETHER WITH ITEMS 355, 360, 370, 380, 385 OPT TO ITEM 445)	E,G	2
375	113T1822-23		..FILLER- (ITEMS 430 AND 450 TOGETHER WITH ITEMS 355, 360, 365, 375, 380 AND 385 OR ITEMS 430A AND 455 TOGETHER WITH ITEMS 355, 360, 370, 380, 385 OPT TO ITEM 435) (ITEMS 440 AND 460 TOGETHER WITH ITEMS 355, 360, 365, 375, 380 AND 385 OR ITEMS 440A AND 465 TOGETHER WITH ITEMS 355, 360, 370, 380, 385 OPT TO ITEM 445)	E,G	2

57-26-32

ILLUSTRATED PARTS LIST

01.1

Page 1065

Nov 01/02

FIG. & ITEM	PART NO.	AIRLINE PART NUMBER	NOMENCLATURE 1234567	EFF CODE	QTY PER ASSY
02-380	HL79-8		..COLLAR- (V56878) (SPEC BACC30M8) (OPT HL79-8 (V73197)) (OPT HL79-8 (V92215)) (OPT 66014-8 (V56878)) (OPT HL79-8 (V5M902)) (ITEMS 430 AND 450 TOGETHER WITH ITEMS 355, 360, 365, 375, 380 AND 385 OR ITEMS 430A AND 455 TOGETHER WITH ITEMS 355, 360, 370, 380, 385 OPT TO ITEM 435) (ITEMS 440 AND 460 TOGETHER WITH ITEMS 355, 360, 365, 375, 380 AND 385 OR ITEMS 440A AND 465 TOGETHER WITH ITEMS 355, 360, 370, 380, 385 OPT TO ITEM 445)	E,G	2
385	BACS40R07C15F		..SHIM- (ITEMS 430 AND 450 TOGETHER WITH ITEMS 355, 360, 365, 375, 380 AND 385 OR ITEMS 430A AND 455 TOGETHER WITH ITEMS 355, 360, 370, 380, 385 OPT TO ITEM 435) (ITEMS 440 AND 460 TOGETHER WITH ITEMS 355, 360, 365, 375, 380 AND 385 OR ITEMS 440A AND 465 TOGETHER WITH ITEMS 355, 360, 370, 380, 385 OPT TO ITEM 445)	E,G	1
390	BACR15BA6AD		..RIVET- (SIZE DETERMINE ON INST)	E,G	39
395	NAS1399MW6-4		..RIVET	E,G	2
400	NAS1399MW6-5		..RIVET	E,G	2

# 57-26-32

ILLUSTRATED PARTS LIST

01.1

Page 1066

Nov 01/02


**BOEING**  
 COMPONENT  
 MAINTENANCE MANUAL

FIG. & ITEM	PART NO.	AIRLINE PART NUMBER	NOMENCLATURE 1234567	EFF CODE	QTY PER ASSY
02-405	113T1862-11		..BOND ASSY- (REPLD BY ITEM 405A)	E	1
-405A	113T1862-13		..BOND ASSY- (REPLS ITEM 405)	E	1
-410	113T1862-12		..BOND ASSY- (REPLD BY ITEM 410A)	G	1
-410A	113T1862-14		..BOND ASSY- (REPLS ITEM 410)	G	1
415	BACR15FT8AD5		..RIVET	E,G	2
420	113T1888-3		..FRAME	E	1
-425	113T1888-4		..FRAME	G	1
430	113T1886-1		..FRAME- (ITEMS 430 AND 450 TOGETHER WITH ITEMS 355, 360, 365, 375, 380 AND 385 OR ITEMS 430A AND 455 TOGETHER WITH ITEMS 355, 360, 370, 380, 385 OPT TO ITEM 435)	E	1
-430A	113T1886-5		..FRAME- (ITEMS 430 AND 450 TOGETHER WITH ITEMS 355, 360, 365, 375, 380 AND 385 OR ITEMS 430A AND 455 TOGETHER WITH ITEMS 355, 360, 370, 380, 385 OPT TO ITEM 435)	E	1
435	113T1824-1		..FRAME- (ITEMS 430 AND 450 TOGETHER WITH ITEMS 355, 360, 365, 375, 380 AND 385 OR ITEMS 430A AND 455 TOGETHER WITH ITEMS 355, 360, 370, 380, 385 OPT TO ITEM 435)	E	1

57-26-32

 ILLUSTRATED PARTS LIST  
 01.1 Page 1067  
 Nov 01/02

FIG. & ITEM	PART NO.	AIRLINE PART NUMBER	NOMENCLATURE 1234567	EFF CODE	QTY PER ASSY
02- -440	113T1886-2		..FRAME- (ITEMS 440 AND 460 TOGETHER WITH ITEMS 355, 360, 365, 375, 380 AND 385 OR ITEMS 440A AND 465 TOGETHER WITH ITEMS 355, 360, 370, 380, 385 OPT TO ITEM 445)	G	1
-440A	113T1886-6		..FRAME- (ITEMS 440 AND 460 TOGETHER WITH ITEMS 355, 360, 365, 375, 380 AND 385 OR ITEMS 440A AND 465 TOGETHER WITH ITEMS 355, 360, 370, 380, 385 OPT TO ITEM 445)	G	1
-445	113T1824-2		..FRAME- (ITEMS 440 AND 460 TOGETHER WITH ITEMS 355, 360, 365, 375, 380 AND 385 OR ITEMS 440A AND 465 TOGETHER WITH ITEMS 355, 360, 370, 380, 385 OPT TO ITEM 445)	G	1
450	113T1886-3		..FRAME- (ITEMS 430 AND 450 TOGETHER WITH ITEMS 355, 360, 365, 375, 380 AND 385 OR ITEMS 430A AND 455 TOGETHER WITH ITEMS 355, 360, 370, 380, 385 OPT TO ITEM 435)	E	1

# 57-26-32

ILLUSTRATED PARTS LIST

01.1

Page 1068

Nov 01/02


**BOEING**  
 COMPONENT  
 MAINTENANCE MANUAL

FIG. & ITEM	PART NO.	AIRLINE PART NUMBER	NOMENCLATURE 1234567	EFF CODE	QTY PER ASSY
02-455	113T1886-7		..FRAME- (ITEMS 430 AND 450 TOGETHER WITH ITEMS 355, 360, 365, 375, 380 AND 385 OR ITEMS 430A AND 455 TOGETHER WITH ITEMS 355, 360, 370, 380, 385 OPT TO ITEM 435)	E	1
-460	113T1886-4		..FRAME- (ITEMS 440 AND 460 TOGETHER WITH ITEMS 355, 360, 365, 375, 380 AND 385 OR ITEMS 440A AND 465 TOGETHER WITH ITEMS 355, 360, 370, 380, 385 OPT TO ITEM 445)	G	1
-465	113T1886-6		..FRAME- (ITEMS 440 AND 460 TOGETHER WITH ITEMS 355, 360, 365, 375, 380 AND 385 OR ITEMS 440A AND 465 TOGETHER WITH ITEMS 355, 360, 370, 380, 385 OPT TO ITEM 445)	G	1

- Item Not Illustrated

# 57-26-32

ILLUSTRATED PARTS LIST

01.1

Page 1069

Nov 01/02